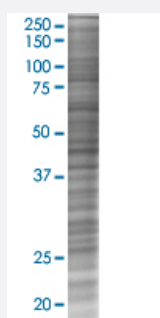


# CCRK 293T Cell Transient Overexpression Lysate(Denatured)

Catalog # H00023552-T02

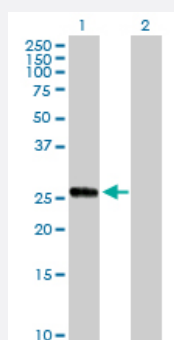
Size 100 uL

## Applications



### SDS-PAGE Gel

CCRK transfected lysate.



### Western Blot

Lane 1: CCRK transfected lysate ( 30.60 kDa)

Lane 2: Non-transfected lysate.

## Specification

Transfected Cell Line	293T
Plasmid	pCMV-CCRK full-length
Host	Human
Theoretical MW (kDa)	30.6
Interspecies Antigen Sequence	Mouse (86); Rat (86)

**Quality Control Testing**

Transient overexpression cell lysate was tested with Anti-CCRK antibody ([H00023552-D01P](#)) by Western Blots.  
SDS-PAGE Gel  
CCRK transfected lysate.  
Western Blot  
Lane 1: CCRK transfected lysate ( 30.60 KDa)  
Lane 2: Non-transfected lysate.

**Storage Buffer**

1X Sample Buffer (50 mM Tris-HCl, 2% SDS, 10% glycerol, 300 mM 2-mercaptoethanol, 0.01% Bromophenol blue)

**Storage Instruction**

Store at -80°C. Aliquot to avoid repeated freezing and thawing.

## Applications

- Western Blot

## Gene Info — CCRK

**Entrez GeneID**[23552](#)**GeneBank Accession#**[BC002655.2](#)**Protein Accession#**[AAH02655.1](#)**Gene Name**

CCRK

**Gene Alias**

CDCH, p42

**Gene Description**

cell cycle related kinase

**Omim ID**[610076](#)**Gene Ontology**[Hyperlink](#)**Gene Summary**

The protein encoded by this gene contains a kinase domain most closely related to the cyclin-dependent protein kinases. The encoded kinase activates CDK2 and is involved in cell growth. Alternatively spliced transcript variants encoding distinct isoforms have been reported. [provided by RefSeq]

**Other Designations**

CAK-kinase p42|CDK-activating kinase p42|OTTHUMP00000021607|OTTHUMP00000123392|OTTHUMP00000123393|cyclin-dependent protein kinase H|cyclin-kinase-activating kinase p42