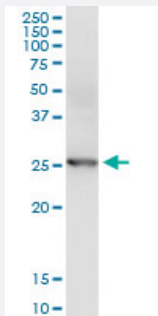


# CCRK (Human) IP-WB Antibody Pair

Catalog # H00023552-PW2

Size 1 Set

## Applications



Immunoprecipitation of CCRK transfected lysate using rabbit polyclonal anti-CCRK and Protein A Magnetic Bead ([U0007](#)), and immunoblotted with mouse purified polyclonal anti-CCRK.

## Specification

<b>Product Description</b>	This IP-WB antibody pair set comes with one antibody for immunoprecipitation and another to detect the precipitated protein in western blot.
<b>Reactivity</b>	Human
<b>Interspecies Antigen Sequence</b>	Mouse (86); Rat (86)
<b>Quality Control Testing</b>	Immunoprecipitation-Western Blot (IP-WB) Immunoprecipitation of CCRK transfected lysate using rabbit polyclonal anti-CCRK and Protein A Magnetic Bead ( <a href="#">U0007</a> ), and immunoblotted with mouse purified polyclonal anti-CCRK.
<b>Supplied Product</b>	Antibody pair set content: 1. Antibody pair for IP: rabbit polyclonal anti-CCRK (300 ul) 2. Antibody pair for WB: mouse purified polyclonal anti-CCRK (50 ug)
<b>Storage Instruction</b>	Store reagents of the antibody pair set at -20°C or lower. Please aliquot to avoid repeated freeze thaw cycle. Reagents should be returned to -20°C storage immediately after use.

## Applications

- Immunoprecipitation-Western Blot

[Protocol Download](#)

## Gene Info — CCRK

Entrez GeneID	<a href="#">23552</a>
---------------	-----------------------

Gene Name	CCRK
-----------	------

Gene Alias	CDCH, p42
------------	-----------

Gene Description	cell cycle related kinase
------------------	---------------------------

Omim ID	<a href="#">610076</a>
---------	------------------------

Gene Ontology	<a href="#">Hyperlink</a>
---------------	---------------------------

Gene Summary	The protein encoded by this gene contains a kinase domain most closely related to the cyclin-dependent protein kinases. The encoded kinase activates CDK2 and is involved in cell growth. Alternatively spliced transcript variants encoding distinct isoforms have been reported. [provided by RefSeq]
--------------	---

Other Designations	CAK-kinase p42 CDK-activating kinase p42 OTTHUMP00000021607 OTTHUMP00000123392 OTTHUMP00000123393 cyclin-dependent protein kinase H cyclin-kinase-activating kinase p42
--------------------	---