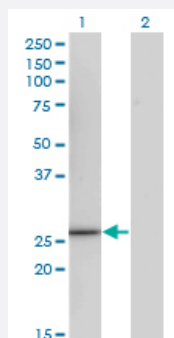


CCRK monoclonal antibody (M13), clone 3E11

Catalog # H00023552-M13

Size 100 ug

Applications

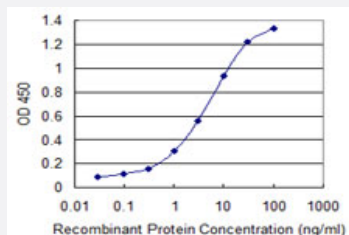


Western Blot (Transfected lysate)

Western Blot analysis of CCRK expression in transfected 293T cell line by CCRK monoclonal antibody (M13), clone 3E11.

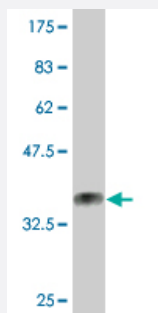
Lane 1: CCRK transfected lysate (30.6 KDa).

Lane 2: Non-transfected lysate.



Sandwich ELISA (Recombinant protein)

Detection limit for recombinant GST tagged CCRK is 0.03 ng/ml as a capture antibody.



Western Blot detection against Immunogen (33.88 KDa) .

Specification

Product Description

Mouse monoclonal antibody raised against a partial recombinant CCRK.

Immunogen	CCRK (AAH02655.1, 183 a.a. ~ 257 a.a) partial recombinant protein with GST tag. MW of the GST tag alone is 26 KDa.
Sequence	FPGKNDIEQLCYVLRILGTPNPQVWPELTELPDYNKISFKEQVPMPLLEEVLPDVSPQALDLLGQFL LYPPHQRIA
Host	Mouse
Reactivity	Human
Interspecies Antigen Sequence	Mouse (88); Rat (87)
Isotype	IgG2a Kappa
Quality Control Testing	Antibody Reactive Against Recombinant Protein. Western Blot detection against Immunogen (33.88 KDa) .
Storage Buffer	In 1x PBS, pH 7.4
Storage Instruction	Store at -20°C or lower. Aliquot to avoid repeated freezing and thawing.

Applications

- Western Blot (Transfected lysate)

Western Blot analysis of CCRK expression in transfected 293T cell line by CCRK monoclonal antibody (M13), clone 3E11.

Lane 1: CCRK transfected lysate(30.6 KDa).

Lane 2: Non-transfected lysate.

[Protocol Download](#)

- Western Blot (Recombinant protein)

[Protocol Download](#)

- Sandwich ELISA (Recombinant protein)

Detection limit for recombinant GST tagged CCRK is 0.03 ng/ml as a capture antibody.

[Protocol Download](#)

- ELISA

Gene Info — CCRK

Entrez GeneID	23552
GeneBank Accession#	BC002655
Protein Accession#	AAH02655.1
Gene Name	CCRK
Gene Alias	CDCH, p42
Gene Description	cell cycle related kinase
Omim ID	610076
Gene Ontology	Hyperlink
Gene Summary	The protein encoded by this gene contains a kinase domain most closely related to the cyclin-dependent protein kinases. The encoded kinase activates CDK2 and is involved in cell growth. Alternatively spliced transcript variants encoding distinct isoforms have been reported. [provided by RefSeq]
Other Designations	CAK-kinase p42 CDK-activating kinase p42 OTTHUMP00000021607 OTTHUMP00000123392 OTTHUMP00000123393 cyclin-dependent protein kinase H cyclin-kinase-activating kinase p42