

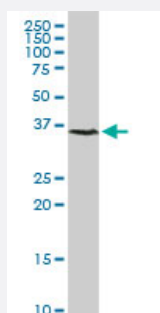
MaxPab®

CCRK purified MaxPab rabbit polyclonal antibody (D01P)

Catalog # H00023552-D01P

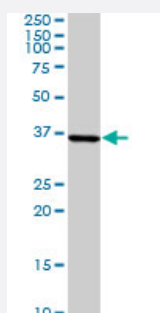
Size 100 ug

Applications



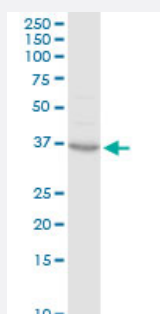
Western Blot (Tissue lysate)

CCRK MaxPab rabbit polyclonal antibody. Western Blot analysis of CCRK expression in human kidney.



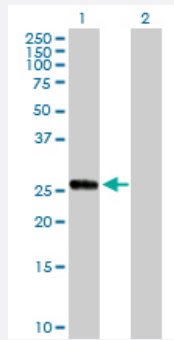
Western Blot (Tissue lysate)

CCRK MaxPab rabbit polyclonal antibody. Western Blot analysis of CCRK expression in mouse liver.



Western Blot (Cell lysate)

CCRK MaxPab rabbit polyclonal antibody. Western Blot analysis of CCRK expression in Jurkat.



Western Blot (Transfected lysate)

Western Blot analysis of CCRK expression in transfected 293T cell line ([H00023552-T02](#)) by CCRK MaxPab polyclonal antibody.

Lane 1: CCRK transfected lysate(30.60 KDa).

Lane 2: Non-transfected lysate.

Specification

Product Description	Rabbit polyclonal antibody raised against a full-length human CCRK protein.
Immunogen	CCRK (AAH02655.1, 1 a.a. ~ 275 a.a) full-length human protein.
Sequence	MDQYCILGRIGEGAHGIVFKAKHVETGEVALKKVALRRLEDGFPNQALREIKALQEMEDNQYVVQ LKAVFPHGGSFVLAFAEFMLSDLAEVVRHAQRPLAQAVKSYLQMLLKGVAFCHANNIVHRDLKP ANLLISASGQLKIADFGLARVFSPDGSRLYTHQVATRSVGCIMGELLNGSPLFPGKNDIEQLCYVLR ILGTPNPQVWPELTELDPYNKISFKEQVPMPLLEVLDPDVSPQALDLLGQFLLYPPHQRIAASKLPC LPIHLSCRFLSV
Host	Rabbit
Reactivity	Human, Mouse
Interspecies Antigen Sequence	Mouse (86); Rat (86)
Quality Control Testing	Antibody reactive against mammalian transfected lysate.
Storage Buffer	In 1x PBS, pH 7.4
Storage Instruction	Store at -20°C or lower. Aliquot to avoid repeated freezing and thawing.

Applications

- Western Blot (Tissue lysate)

CCRK MaxPab rabbit polyclonal antibody. Western Blot analysis of CCRK expression in human kidney.

[Protocol Download](#)

- Western Blot (Tissue lysate)

CCRK MaxPab rabbit polyclonal antibody. Western Blot analysis of CCRK expression in mouse liver.

[Protocol Download](#)

- Western Blot (Cell lysate)

CCRK MaxPab rabbit polyclonal antibody. Western Blot analysis of CCRK expression in Jurkat.

[Protocol Download](#)

- Western Blot (Transfected lysate)

Western Blot analysis of CCRK expression in transfected 293T cell line ([H00023552-T02](#)) by CCRK MaxPab polyclonal antibody.

Lane 1: CCRK transfected lysate(30.60 KDa).

Lane 2: Non-transfected lysate.

[Protocol Download](#)

Gene Info — CCRK

Entrez GeneID [23552](#)

GeneBank Accession# [BC002655.2](#)

Protein Accession# [AAH02655.1](#)

Gene Name CCRK

Gene Alias CDCH, p42

Gene Description cell cycle related kinase

Omim ID [610076](#)

Gene Ontology [Hyperlink](#)

Gene Summary The protein encoded by this gene contains a kinase domain most closely related to the cyclin-dependent protein kinases. The encoded kinase activates CDK2 and is involved in cell growth. Alternatively spliced transcript variants encoding distinct isoforms have been reported. [provided by RefSeq]

Other Designations CAK-kinase p42|CDK-activating kinase p42|OTTHUMP00000021607|OTTHUMP00000123392|OTTHUMP00000123393|cyclin-dependent protein kinase H|cyclin-kinase-activating kinase p42