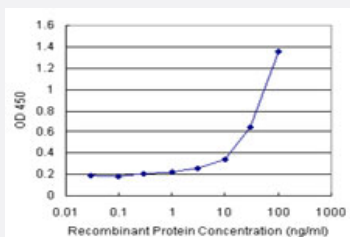


CCRK (Human) Matched Antibody Pair

Catalog # H00023552-AP11

Size 1 Set

Applications



Sandwich ELISA detection sensitivity ranging from 3 ng/ml to 100 ng/ml.

Specification

| | |
|--------------------------------------|--|
| Product Description | This antibody pair set comes with a matched antibody pair to detect and quantify the protein level of human CCRK. |
| Reactivity | Human |
| Interspecies Antigen Sequence | Mouse (86); Rat (86) |
| Quality Control Testing | Standard curve using recombinant protein (H00023552-P01) as an analyte. Sandwich ELISA detection sensitivity ranging from 3 ng/ml to 100 ng/ml. |
| Supplied Product | Antibody pair set content: 1. Capture antibody: rabbit MaxPab® affinity purified polyclonal anti-CCRK (100 ug) 2. Detection antibody: mouse monoclonal anti-CCRK, IgG2a Kappa (20 ug) *Reagents are sufficient for at least 1-2 x 96 well plates using recommended protocols. |
| Storage Instruction | Store reagents of the antibody pair set at -20°C or lower. Please aliquot to avoid repeated freeze thaw cycle. Reagents should be returned to -20°C storage immediately after use. |

Applications

- ELISA Pair (Recombinant protein)

[Protocol Download](#)

Gene Info — CCRK

| | |
|--------------------|---|
| Entrez GeneID | 23552 |
| Gene Name | CCRK |
| Gene Alias | CDCH, p42 |
| Gene Description | cell cycle related kinase |
| Omim ID | 610076 |
| Gene Ontology | Hyperlink |
| Gene Summary | The protein encoded by this gene contains a kinase domain most closely related to the cyclin-dependent protein kinases. The encoded kinase activates CDK2 and is involved in cell growth. Alternatively spliced transcript variants encoding distinct isoforms have been reported. [provided by RefSeq] |
| Other Designations | CAK-kinase p42 CDK-activating kinase p42 OTTHUMP00000021607 OTTHUMP00000123392 OTTHUMP00000123393 cyclin-dependent protein kinase H cyclin-kinase-activating kinase p42 |