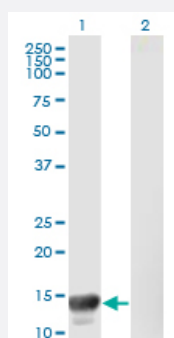


MACF1 monoclonal antibody (M08), clone 1G9

Catalog # H00023499-M08

Size 100 ug

Applications

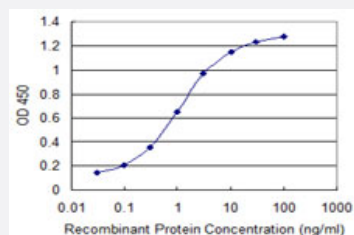


Western Blot (Transfected lysate)

Western Blot analysis of MACF1 expression in transfected 293T cell line by MACF1 monoclonal antibody (M08), clone 1G9.

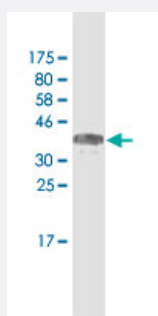
Lane 1: MACF1 transfected lysate (10.45 KDa).

Lane 2: Non-transfected lysate.



Sandwich ELISA (Recombinant protein)

Detection limit for recombinant GST tagged MACF1 is 0.03 ng/ml as a capture antibody.



Western Blot detection against Immunogen (36.08 KDa) .

Specification

Product Description

Mouse monoclonal antibody raised against a partial recombinant MACF1.

Immunogen	MACF1 (AAH07330, 1 a.a. ~ 95 a.a) partial recombinant protein with GST tag. MW of the GST tag alone is 26 KDa.
Sequence	KIEDEVTRQVAQCKCAKRFQVEQIGENKYRFGDSQQRLRLVRILRSTVMVRVGGGWMALDEFLVK NDPCRARGRTNIELREKFILPEGASQGMTPF
Host	Mouse
Reactivity	Human
Isotype	IgG1 Kappa
Quality Control Testing	Antibody Reactive Against Recombinant Protein. Western Blot detection against Immunogen (36.08 KDa) .
Storage Buffer	In 1x PBS, pH 7.4
Storage Instruction	Store at -20°C or lower. Aliquot to avoid repeated freezing and thawing.

Applications

- Western Blot (Transfected lysate)

Western Blot analysis of MACF1 expression in transfected 293T cell line by MACF1 monoclonal antibody (M08), clone 1G9.

Lane 1: MACF1 transfected lysate(10.45 KDa).

Lane 2: Non-transfected lysate.

[Protocol Download](#)

- Western Blot (Recombinant protein)

[Protocol Download](#)

- Sandwich ELISA (Recombinant protein)

Detection limit for recombinant GST tagged MACF1 is 0.03 ng/ml as a capture antibody.

[Protocol Download](#)

- ELISA

Gene Info — MACF1

Entrez GeneID [23499](#)

GeneBank Accession# [BC007330](#)

Protein Accession#	AAH07330
Gene Name	MACF1
Gene Alias	ABP620, ACF7, FLJ45612, FLJ46776, KIAA0465, KIAA1251, MACF, OFC4
Gene Description	microtubule-actin crosslinking factor 1
Omim ID	608271
Gene Ontology	Hyperlink
Gene Summary	<p>The protein encoded by this gene belongs to the plakin family of cytoskeletal linker proteins. This protein family forms bridges between different cytoskeletal elements through specialized modular domains. The encoded protein is one of the largest size proteins identified in human cytoskeletal proteins. It has functional actin and microtubule binding domains, and it appears to stabilize actin at sites where microtubules and microfilaments meet. It may function in microtubule dynamics to facilitate actin-microtubule interactions at the cell periphery and to couple the microtubule network to cellular junctions. Alternatively spliced transcript variants encoding distinct isoforms have been described. [provided by RefSeq]</p>
Other Designations	620 kDa actin binding protein OTTHUMP00000009301 OTTHUMP00000009303 actin cross-linking factor actin cross-linking family protein 7 macrophin 1 microfilament and actin filament cross-linker protein trabeculin-alpha

Disease

- [Cardiovascular Diseases](#)
- [Diabetes Mellitus](#)
- [Edema](#)
- [Tobacco Use Disorder](#)