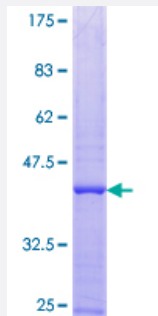


# PES1 (Human) Recombinant Protein (Q01)

Catalog # H00023481-Q01

Size 25 ug, 10 ug

## Applications



## Specification

<b>Product Description</b>	Human PES1 partial ORF ( NP_055118.1, 3 a.a. - 100 a.a.) recombinant protein with GST-tag at N-terminal.
<b>Sequence</b>	GLEKKKYERGSATNYTRNKARKKLQLSLADFRRLCILKGYPHEPKHKKKVNGKSTAARTFYLIKDI RFLLEHPIVNFREYKVFVRKLRKAYGKSE
<b>Host</b>	Wheat Germ (in vitro)
<b>Theoretical MW (kDa)</b>	36.52
<b>Interspecies Antigen Sequence</b>	Mouse (89); Rat (90)
<b>Preparation Method</b>	<a href="#">in vitro wheat germ expression system</a>
<b>Purification</b>	Glutathione Sepharose 4 Fast Flow
<b>Quality Control Testing</b>	12.5% SDS-PAGE Stained with Coomassie Blue.
<b>Storage Buffer</b>	50 mM Tris-HCl, 10 mM reduced Glutathione, pH=8.0 in the elution buffer.
<b>Storage Instruction</b>	Store at -80°C. Aliquot to avoid repeated freezing and thawing.
<b>Note</b>	Best use within three months from the date of receipt of this protein.

## Applications

- Enzyme-linked Immunoabsorbent Assay
- Western Blot (Recombinant protein)
- Antibody Production
- Protein Array

## Gene Info — PES1

Entrez GeneID	<a href="#">23481</a>
---------------	-----------------------

GeneBank Accession#	<a href="#">NM_014303</a>
---------------------	---------------------------

Protein Accession#	<a href="#">NP_055118.1</a>
--------------------	-----------------------------

Gene Name	PES1
-----------	------

Gene Alias	PES
------------	-----

Gene Description	pescadillo homolog 1, containing BRCT domain (zebrafish)
------------------	--

Omim ID	<a href="#">605819</a>
---------	------------------------

Gene Ontology	<a href="#">Hyperlink</a>
---------------	---------------------------

Gene Summary	This gene encodes a protein that is abnormally elevated in malignant tumors of astrocytic origin. It is a strongly conserved gene containing a BRCT domain that is essential for the activity of this gene product. The gene plays a crucial role in cell proliferation and may be necessary for oncogenic transformation and tumor progression. [provided by RefSeq]
--------------	---

Other Designations	pescadillo homolog 1, containing BRCT domain
--------------------	--