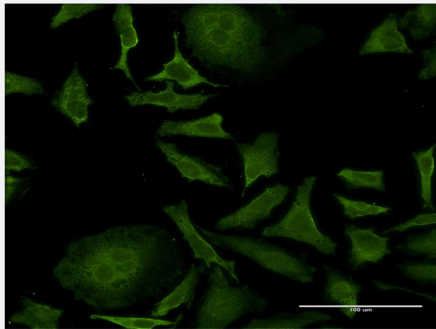


NIFUN monoclonal antibody (M02), clone 3D12-1D10

Catalog # H00023479-M02

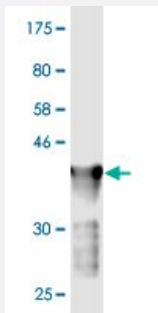
Size 100 ug

Applications



Immunofluorescence

Immunofluorescence of monoclonal antibody to ISCU on HeLa cell . [antibody concentration 10 ug/ml]



Western Blot detection against Immunogen (41.36 KDa) .

Specification

Product Description	Mouse monoclonal antibody raised against a full-length recombinant NIFUN.
Immunogen	NIFUN (AAH11906, 26 a.a. ~ 167 a.a) full-length recombinant protein with GST tag. MW of the GST tag alone is 26 KDa.
Sequence	RELSAPARLYHKKVVDHYENPRNVGSLDKTSKNVGTGLVGAPACGDVMKLQIQVDEKGKIVDAR FKTFGCGSAIASSSLATEWVKGKTVEEALTIKNTDIAKELCLPPVKLHCSMLAEDAIIKAALADYKLIK QEPKKGEAEKK
Host	Mouse
Reactivity	Human

Interspecies Antigen Sequence	Mouse (96); Rat (96)
Isotype	IgG1 Kappa
Quality Control Testing	Antibody Reactive Against Recombinant Protein. Western Blot detection against Immunogen (41.36 KDa) .
Storage Buffer	In 1x PBS, pH 7.4
Storage Instruction	Store at -20°C or lower. Aliquot to avoid repeated freezing and thawing.

Applications

- Western Blot (Recombinant protein)

[Protocol Download](#)

- ELISA

- Immunofluorescence

Immunofluorescence of monoclonal antibody to ISCU on HeLa cell . [antibody concentration 10 ug/ml]

Gene Info — ISCU

Entrez GeneID	23479
GeneBank Accession#	BC011906
Protein Accession#	AAH11906
Gene Name	ISCU
Gene Alias	2310020H20Rik, HML, ISU2, MGC74517, NIFU, NIFUN, hnifU
Gene Description	iron-sulfur cluster scaffold homolog (E. coli)
Gene Ontology	Hyperlink
Gene Summary	Iron-sulfur (Fe-S) clusters are necessary for several mitochondrial enzymes and other subcellular compartment proteins. They contain sulfur and iron, and are created via several steps that include cysteine desulfurases, iron donors, chaperones, and scaffold proteins. This gene encodes the two isomeric forms, ISCU1 and ISCU2, of the Fe-S cluster scaffold protein. Mutations in this gene have been found in patients with myopathy with severe exercise intolerance and myoglobinuria. [provided by RefSeq]

Other Designations

lscU iron-sulfur cluster scaffold homolog|NifU-like N-terminal domain containing|iron-sulfur cluster assembly enzyme|nitrogen fixation cluster-like
