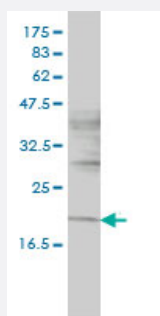


NIFUN monoclonal antibody (M01), clone 3B8-1C4

Catalog # H00023479-M01

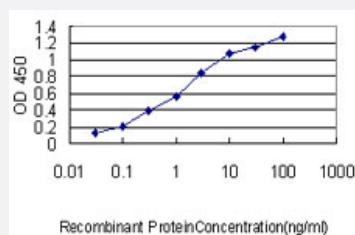
Size 100 ug

Applications



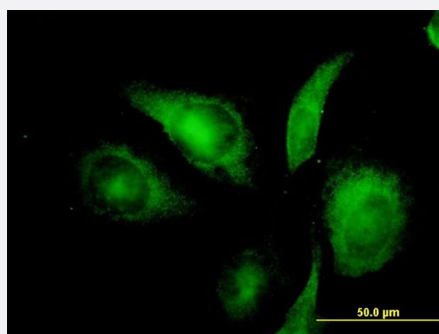
Western Blot (Cell lysate)

NIFUN monoclonal antibody (M01), clone 3B8-1C4 Western Blot analysis of NIFUN expression in HL-60 (Cat # L014V1).



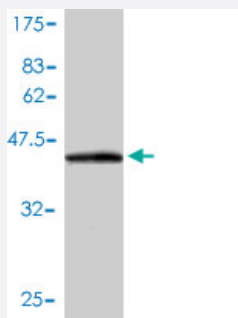
Sandwich ELISA (Recombinant protein)

Detection limit for recombinant GST tagged NIFUN is approximately 0.03ng/ml as a capture antibody.



Immunofluorescence

Immunofluorescence of monoclonal antibody to NIFUN on HeLa cell. [antibody concentration 10 ug/ml]



Western Blot detection against Immunogen (41.36 KDa) .

Specification

Product Description	Mouse monoclonal antibody raised against a full length recombinant NIFUN.
Immunogen	NIFUN (AAH11906, 26 a.a. ~ 167 a.a) full-length recombinant protein with GST tag. MW of the GST tag alone is 26 KDa.
Sequence	RELSAPARLYHKKVVDHYENPRNVGSLDKTSKNVGTGLVGAPACGDVMKLQIQVDEKGKIVDAR FKTFGCGSAIASSSLATEWVKGKTVEEALTIKNTDIAKELCLPPVKLHCSMLAEDAIIKAALADYKLIK QEPKKGEAEKK
Host	Mouse
Reactivity	Human
Interspecies Antigen Sequence	Mouse (96); Rat (96)
Isotype	IgG1 kappa
Quality Control Testing	Antibody Reactive Against Recombinant Protein. Western Blot detection against Immunogen (41.36 KDa) .
Storage Buffer	In 1x PBS, pH 7.4
Storage Instruction	Store at -20°C or lower. Aliquot to avoid repeated freezing and thawing.

Applications

- Western Blot (Cell lysate)

NIFUN monoclonal antibody (M01), clone 3B8-1C4 Western Blot analysis of NIFUN expression in HL-60 (Cat # L014V1).

[Protocol Download](#)

- Western Blot (Recombinant protein)

[Protocol Download](#)

- Sandwich ELISA (Recombinant protein)

Detection limit for recombinant GST tagged NIFUN is approximately 0.03ng/ml as a capture antibody.

[Protocol Download](#)

- ELISA

- Immunofluorescence

Immunofluorescence of monoclonal antibody to NIFUN on HeLa cell. [antibody concentration 10 ug/ml]

Gene Info — ISCU

Entrez GeneID [23479](#)

GeneBank Accession# [BC011906](#)

Protein Accession# [AAH11906](#)

Gene Name ISCU

Gene Alias 2310020H20Rik, HML, ISU2, MGC74517, NIFU, NIFUN, hnifU

Gene Description iron-sulfur cluster scaffold homolog (E. coli)

Gene Ontology [Hyperlink](#)

Gene Summary Iron-sulfur (Fe-S) clusters are necessary for several mitochondrial enzymes and other subcellular compartment proteins. They contain sulfur and iron, and are created via several steps that include cysteine desulfurases, iron donors, chaperones, and scaffold proteins. This gene encodes the two isomeric forms, ISCU1 and ISCU2, of the Fe-S cluster scaffold protein. Mutations in this gene have been found in patients with myopathy with severe exercise intolerance and myoglobinuria. [provided by RefSeq]

Other Designations IscU iron-sulfur cluster scaffold homolog|NifU-like N-terminal domain containing|iron-sulfur cluster assembly enzyme|nitrogen fixation cluster-like

Publication Reference

- [Metabolic adaptation to chronic hypoxia in cardiac mitochondria.](#)

Heather LC, Cole MA, Tan JJ, Ambrose LJ, Pope S, Abd-Jamil AH, Carter EE, Dodd MS, Yeoh KK, Schofield CJ, Clarke K.
Basic Research in Cardiology 2012 May; 107(3):268.

Application: WB-Ti, Rat, Rat hearts