

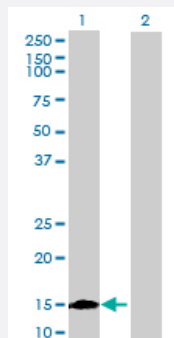
MaxPab®

NIFUN purified MaxPab mouse polyclonal antibody (B01P)

Catalog # H00023479-B01P

Size 50 ug

Applications



Western Blot (Transfected lysate)

Western Blot analysis of ISCU expression in transfected 293T cell line ([H00023479-T01](#)) by ISCU MaxPab polyclonal antibody.

Lane 1: NIFUN transfected lysate(15.62 KDa).

Lane 2: Non-transfected lysate.

Specification

Product Description

Mouse polyclonal antibody raised against a full-length human NIFUN protein.

Immunogen

NIFUN (NP_055116, 1 a.a. ~ 142 a.a) full-length human protein.

Sequence

MVLIDMSVDLSTQVVDHYENPRNVGSLDKTSKNVGTGLVGAPACGDVMKLQIQVDEKGKIVDAR
FKTFGCGSAIASSSLATEWVGKKTVEEALTIKNTDIAKELCLPPVKLHCSMLAEDAIIKAALADYKLK
QEPKKGEAEKK

Host

Mouse

Reactivity

Human

Interspecies Antigen Sequence

Mouse (96); Rat (96)

Quality Control Testing

Antibody reactive against mammalian transfected lysate.

Storage Buffer

In 1x PBS, pH 7.4

Storage Instruction

Store at -20°C or lower. Aliquot to avoid repeated freezing and thawing.

Applications

- Western Blot (Transfected lysate)

Western Blot analysis of ISCU expression in transfected 293T cell line ([H00023479-T01](#)) by ISCU MaxPab polyclonal antibody.

Lane 1: NIFUN transfected lysate(15.62 KDa).

Lane 2: Non-transfected lysate.

[Protocol Download](#)

Gene Info — ISCU

Entrez GeneID [23479](#)

GeneBank Accession# [NM_014301](#)

Protein Accession# [NP_055116](#)

Gene Name ISCU

Gene Alias 2310020H20Rik, HML, ISU2, MGC74517, NIFU, NIFUN, hnfU

Gene Description iron-sulfur cluster scaffold homolog (E. coli)

Gene Ontology [Hyperlink](#)

Gene Summary Iron-sulfur (Fe-S) clusters are necessary for several mitochondrial enzymes and other subcellular compartment proteins. They contain sulfur and iron, and are created via several steps that include cysteine desulfurases, iron donors, chaperones, and scaffold proteins. This gene encodes the two isoformic forms, ISCU1 and ISCU2, of the Fe-S cluster scaffold protein. Mutations in this gene have been found in patients with myopathy with severe exercise intolerance and myoglobinuria. [provided by RefSeq]

Other Designations IscU iron-sulfur cluster scaffold homolog|NifU-like N-terminal domain containing|iron-sulfur cluster assembly enzyme|nitrogen fixation cluster-like