

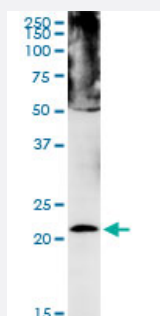
MaxPab®

CBX5 purified MaxPab mouse polyclonal antibody (B01P)

Catalog # H00023468-B01P

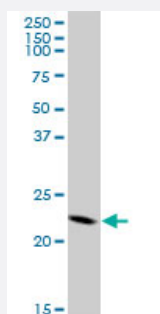
Size 50 ug

Applications



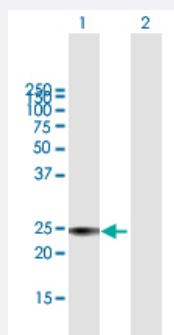
Western Blot (Cell lysate)

CBX5 MaxPab polyclonal antibody. Western Blot analysis of CBX5 expression in IMR-32.



Western Blot (Cell lysate)

CBX5 MaxPab polyclonal antibody. Western Blot analysis of CBX5 expression in C32.

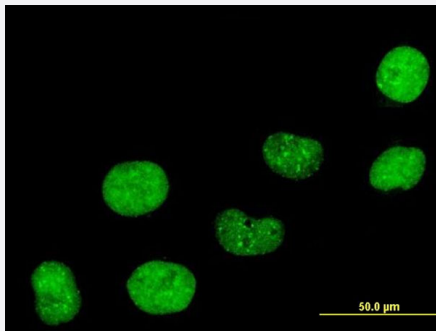


Western Blot (Transfected lysate)

Western Blot analysis of CBX5 expression in transfected 293T cell line ([H00023468-T01](#)) by CBX5 MaxPab polyclonal antibody.

Lane 1: CBX5 transfected lysate(21.01 KDa).

Lane 2: Non-transfected lysate.



Immunofluorescence

Immunofluorescence of purified MaxPab antibody to CBX5 on HeLa cell.
[antibody concentration 10 ug/ml]

Specification

| | |
|--------------------------------------|--|
| Product Description | Mouse polyclonal antibody raised against a full-length human CBX5 protein. |
| Immunogen | CBX5 (NP_036249.1, 1 a.a. ~ 191 a.a) full-length human protein. |
| Sequence | MGKTKRTADSSSSSEDEEEYVVEKVLDRRVVKGQVEYLLKWKGFSSEHNTWEPEKNLDCPELI SEFMKKYKKMKEGENNKPREKSESNNKRSNFSNSADDIKSKKKREQSNDIARGFERGLEPEKIIIG ATDSCGDLMLMKWKDTDEADLVLAKEANVKCPQVIAFYEERLTWHAYPEDAENKEKETAKS |
| Host | Mouse |
| Reactivity | Human |
| Interspecies Antigen Sequence | Mouse (97); Rat (97) |
| Quality Control Testing | Antibody reactive against mammalian transfected lysate. |
| Storage Buffer | In 1x PBS, pH 7.4 |
| Storage Instruction | Store at -20°C or lower. Aliquot to avoid repeated freezing and thawing. |

Applications

- Western Blot (Cell lysate)

CBX5 MaxPab polyclonal antibody. Western Blot analysis of CBX5 expression in IMR-32.

[Protocol Download](#)

- Western Blot (Cell lysate)

CBX5 MaxPab polyclonal antibody. Western Blot analysis of CBX5 expression in C32.

[Protocol Download](#)

- Western Blot (Transfected lysate)

Western Blot analysis of CBX5 expression in transfected 293T cell line ([H00023468-T01](#)) by CBX5 MaxPab polyclonal antibody.

Lane 1: CBX5 transfected lysate(21.01 KDa).

Lane 2: Non-transfected lysate.

[Protocol Download](#)

- Immunofluorescence

Immunofluorescence of purified MaxPab antibody to CBX5 on HeLa cell. [antibody concentration 10 ug/ml]

Gene Info — CBX5

Entrez GeneID [23468](#)

GeneBank Accession# [NM_012117.1](#)

Protein Accession# [NP_036249.1](#)

Gene Name CBX5

Gene Alias HP1, HP1A

Gene Description chromobox homolog 5 (HP1 alpha homolog, Drosophila)

Omim ID [604478](#)

Gene Ontology [Hyperlink](#)

Gene Summary

This gene encodes a highly conserved nonhistone protein, which is a member of the heterochromatin protein family. The protein is enriched in the heterochromatin and associated with centromeres. The protein has a single N-terminal chromodomain which can bind to histone proteins via methylated lysine residues, and a C-terminal chromo shadow-domain (CSD) which is responsible for the homodimerization and interaction with a number of chromatin-associated nonhistone proteins. The encoded product is involved in the formation of functional kinetochore through interaction with essential kinetochore proteins. The gene has a pseudogene located on chromosome 3. Multiple alternatively spliced variants, encoding the same protein, have been identified. [provided by RefSeq]

Other Designations

HP1-ALPHA|HP1Hs alpha|antigen p25|heterochromatin protein 1 homolog alpha|heterochromatin protein 1-alpha