

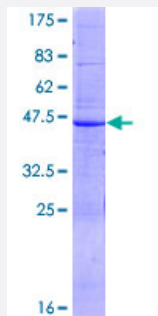
Full-Length

## ABCA6 (Human) Recombinant Protein (P01)

Catalog # H00023460-P01

Size 25 ug, 10 ug

### Applications



### Specification

Product Description	Human ABCA6 full-length ORF ( AAH70125.1, 1 a.a. - 185 a.a.) recombinant protein with GST-tag at N-terminal.
Sequence	MNMKQKSVYQQTKALLCKNFLKKWRMKRESLLEWGLSILLGLCIALFSSSLRNVQFPGMAPQNL GRVDKFNSSSLMVVYTPISNLTQQIMNKTALAPLLKGTSVIGAPNKTHTMDEILLENLPYAMGIIFNETF SYKLIFFQGYNSPRWKEDFSGDFPYQISLWNFSCFQHKQRRLLGNRDAFNDT
Host	Wheat Germ (in vitro)
Theoretical MW (kDa)	47.8
Interspecies Antigen Sequence	Mouse (56); Rat (57)
Preparation Method	<a href="#">in vitro wheat germ expression system</a>
Purification	Glutathione Sepharose 4 Fast Flow
Quality Control Testing	12.5% SDS-PAGE Stained with Coomassie Blue.
Storage Buffer	50 mM Tris-HCl, 10 mM reduced Glutathione, pH=8.0 in the elution buffer.
Storage Instruction	Store at -80°C. Aliquot to avoid repeated freezing and thawing.

## Note

Best use within three months from the date of receipt of this protein.

## Applications

- Enzyme-linked Immunoabsorbent Assay
- Western Blot (Recombinant protein)
- Antibody Production
- Protein Array

## Gene Info — ABCA6

Entrez GeneID [23460](#)

GeneBank Accession# [BC070125.1](#)

Protein Accession# [AAH70125.1](#)

Gene Name ABCA6

Gene Alias EST155051, FLJ43498

Gene Description ATP-binding cassette, sub-family A (ABC1), member 6

Gene Ontology [Hyperlink](#)

**Gene Summary** The membrane-associated protein encoded by this gene is a member of the superfamily of ATP-binding cassette (ABC) transporters. ABC proteins transport various molecules across extra- and intracellular membranes. ABC genes are divided into seven distinct subfamilies (ABC1, MDR/TA P, MRP, ALD, OABP, GCN20, and White). This encoded protein is a member of the ABC1 subfamily. Members of the ABC1 subfamily comprise the only major ABC subfamily found exclusively in multicellular eukaryotes. This gene is clustered among 4 other ABC1 family members on 17q24 and may play a role in macrophage lipid homeostasis. [provided by RefSeq]

**Other Designations** ABC transporter ABCA6|ATP-binding cassette A6|ATP-binding cassette, sub-family A, member 6

## Pathway

- [ABC transporters](#)

## Disease

- [Genetic Predisposition to Disease](#)
- [Lung Neoplasms](#)
- [Pulmonary Disease](#)
- [Tobacco Use Disorder](#)
- [Urinary Bladder Neoplasms](#)
- [Werner syndrome](#)