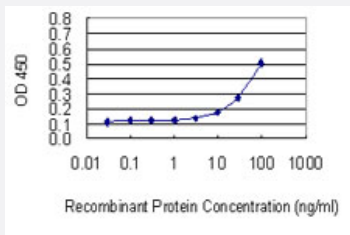


ABCA6 monoclonal antibody (M01), clone 2F1

Catalog # H00023460-M01

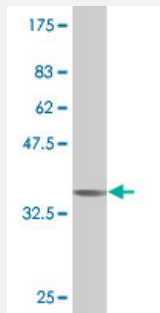
Size 100 ug

Applications



Sandwich ELISA (Recombinant protein)

Detection limit for recombinant GST tagged ABCA6 is 3 ng/ml as a capture antibody.



Western Blot detection against Immunogen (36.41 KDa) .

Specification

Product Description

Mouse monoclonal antibody raised against a partial recombinant ABCA6.

Immunogen

ABCA6 (NP_525023, 53 a.a. ~ 149 a.a) partial recombinant protein with GST tag. MW of the GST tag alone is 26 KDa.

Sequence

NVQFPGMAPQNLGRVDKFNSSSLMVVYTPISNLTQQIMNKTALAPLLKGTSVIGAPNKTTHMDEILL
ENLPYAMGIIIFNETFSYKLIFFQGYNSPLWK

Host

Mouse

Reactivity

Human

Interspecies Antigen Sequence	Mouse (56); Rat (57)
Isotype	IgG1 Kappa
Quality Control Testing	Antibody Reactive Against Recombinant Protein. Western Blot detection against Immunogen (36.41 KDa) .
Storage Buffer	In 1x PBS, pH 7.4
Storage Instruction	Store at -20°C or lower. Aliquot to avoid repeated freezing and thawing.

Applications

- Western Blot (Recombinant protein)

[Protocol Download](#)

- Sandwich ELISA (Recombinant protein)

Detection limit for recombinant GST tagged ABCA6 is 3 ng/ml as a capture antibody.

[Protocol Download](#)

- ELISA

Gene Info — ABCA6

Entrez GeneID	23460
GeneBank Accession#	NM_080284
Protein Accession#	NP_525023
Gene Name	ABCA6
Gene Alias	EST155051, FLJ43498
Gene Description	ATP-binding cassette, sub-family A (ABC1), member 6
Gene Ontology	Hyperlink

Gene Summary

The membrane-associated protein encoded by this gene is a member of the superfamily of ATP-binding cassette (ABC) transporters. ABC proteins transport various molecules across extra- and intracellular membranes. ABC genes are divided into seven distinct subfamilies (ABC1, MDR/TAP, MRP, ALD, OABP, GCN20, and White). This encoded protein is a member of the ABC1 subfamily. Members of the ABC1 subfamily comprise the only major ABC subfamily found exclusively in multicellular eukaryotes. This gene is clustered among 4 other ABC1 family members on 17q24 and may play a role in macrophage lipid homeostasis. [provided by RefSeq]

Other Designations

ABC transporter ABCA6|ATP-binding cassette A6|ATP-binding cassette, sub-family A, member 6

Pathway

- [ABC transporters](#)

Disease

- [Genetic Predisposition to Disease](#)
- [Lung Neoplasms](#)
- [Pulmonary Disease](#)
- [Tobacco Use Disorder](#)
- [Urinary Bladder Neoplasms](#)
- [Werner syndrome](#)