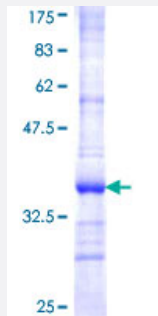


ABCB10 (Human) Recombinant Protein (Q01)

Catalog # H00023456-Q01

Size 25 ug, 10 ug

Applications



Specification

Product Description	Human ABCB10 partial ORF (NP_036221 , 233 a.a. - 311 a.a.) recombinant protein with GST-tag at N-terminal.
Sequence	VYLMQTSQGQRVNRRLRTSLFSSILRQEVAFFDKTRTGELINRLSSDTALLGRSVTENLSDGLRAGAQ ASVGISMFFVS
Host	Wheat Germ (in vitro)
Theoretical MW (kDa)	34.43
Interspecies Antigen Sequence	Mouse (94); Rat (92)
Preparation Method	in vitro wheat germ expression system
Purification	Glutathione Sepharose 4 Fast Flow
Quality Control Testing	12.5% SDS-PAGE Stained with Coomassie Blue.
Storage Buffer	50 mM Tris-HCl, 10 mM reduced Glutathione, pH=8.0 in the elution buffer.
Storage Instruction	Store at -80°C. Aliquot to avoid repeated freezing and thawing.
Note	Best use within three months from the date of receipt of this protein.

Applications

- Enzyme-linked Immunoabsorbent Assay
- Western Blot (Recombinant protein)
- Antibody Production
- Protein Array

Gene Info — ABCB10

Entrez GeneID [23456](#)

GeneBank Accession# [NM_012089](#)

Protein Accession# [NP_036221](#)

Gene Name ABCB10

Gene Alias EST20237, M-ABC2, MTABC2

Gene Description ATP-binding cassette, sub-family B (MDR/TAP), member 10

Omim ID [605454](#)

Gene Ontology [Hyperlink](#)

Gene Summary The membrane-associated protein encoded by this gene is a member of the superfamily of ATP-binding cassette (ABC) transporters. ABC proteins transport various molecules across extra- and intra-cellular membranes. ABC genes are divided into seven distinct subfamilies (ABC1, MDR/TAP, MRP, ALD, OABP, GCN20, White). This protein is a member of the MDR/TAP subfamily. Members of the MDR/TAP subfamily are involved in multidrug resistance. The function of this mitochondrial protein is unknown. [provided by RefSeq]

Other Designations ABC transporter 10 protein|ATP-binding cassette sub-family B member 10, mitochondrial|ATP-binding cassette transporter 10|ATP-binding cassette, sub-family B, member 10|OTTHUMP00000037475|mitochondrial ATP-binding cassette 2

Pathway

- [ABC transporters](#)