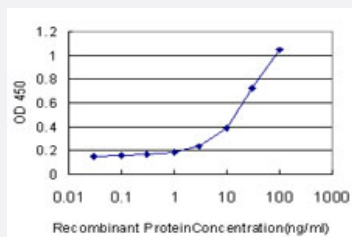


SLC44A1 monoclonal antibody (M02), clone 1C4

Catalog # H00023446-M02

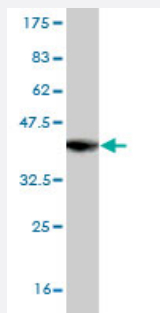
Size 100 ug

Applications



Sandwich ELISA (Recombinant protein)

Detection limit for recombinant GST tagged SLC44A1 is approximately 3ng/ml as a capture antibody.



Western Blot detection against Immunogen (37.84 KDa) .

Specification

Product Description

Mouse monoclonal antibody raised against a partial recombinant SLC44A1.

Immunogen

SLC44A1 (NP_536856, 74 a.a. ~ 183 a.a) partial recombinant protein with GST tag. MW of the GST tag alone is 26 KDa.

Sequence

TKLEAIPNSGMDHTQQRKYVFFLDPCNLDLINRKIKSVALCVAACPRQELKTLSDVQKFAEINGSAL
CSYNLKPSEYTTSPKSSVLCPLPVPASAPIPFFHRCAPVNISC

Host

Mouse

Reactivity

Human

Interspecies Antigen Sequence	Mouse (96); Rat (96)
Isotype	IgG2a Kappa
Quality Control Testing	Antibody Reactive Against Recombinant Protein. Western Blot detection against Immunogen (37.84 KDa) .
Storage Buffer	In 1x PBS, pH 7.4
Storage Instruction	Store at -20°C or lower. Aliquot to avoid repeated freezing and thawing.

Applications

- Western Blot (Recombinant protein)

[Protocol Download](#)

- Sandwich ELISA (Recombinant protein)

Detection limit for recombinant GST tagged SLC44A1 is approximately 3ng/ml as a capture antibody.

[Protocol Download](#)

- ELISA

Gene Info — SLC44A1

Entrez GeneID	23446
GeneBank Accession#	NM_080546
Protein Accession#	NP_536856
Gene Name	SLC44A1
Gene Alias	CD92, CDW92, CHTL1, CTL1, RP11-287A8.1
Gene Description	solute carrier family 44, member 1
Omim ID	606105
Gene Ontology	Hyperlink
Gene Summary	O

Other DesignationsCD92 protein|CDW92 antigen|OTTHUMP00000021838|choline transporter-like protein 1
