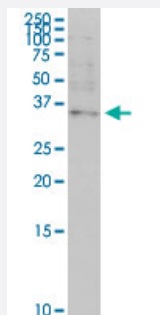


# OTP monoclonal antibody (M03), clone 8E12

Catalog # H00023440-M03

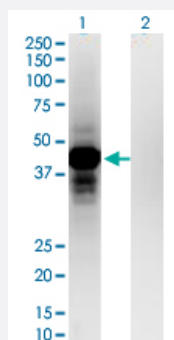
Size 100 ug

## Applications



### Western Blot (Cell lysate)

OTP monoclonal antibody (M03), clone 8E12. Western Blot analysis of OTP expression in HeLa S3 NE.

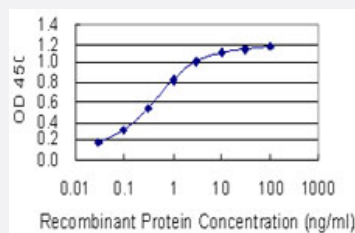


### Western Blot (Transfected lysate)

Western Blot analysis of OTP expression in transfected 293T cell line by OTP monoclonal antibody (M03), clone 8E12.

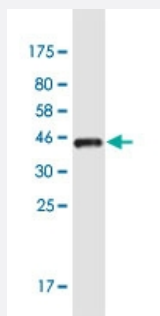
Lane 1: OTP transfected lysate (Predicted MW: 34.2 kDa).

Lane 2: Non-transfected lysate.



### Sandwich ELISA (Recombinant protein)

Detection limit for recombinant GST tagged OTP is 0.03 ng/ml as a capture antibody.



Western Blot detection against Immunogen (37.84 KDa) .

## Specification

<b>Product Description</b>	Mouse monoclonal antibody raised against a partial recombinant OTP.
<b>Immunogen</b>	OTP (NP_115485.1, 11 a.a. ~ 120 a.a) partial recombinant protein with GST tag. MW of the GST tag alone is 26 KDa.
<b>Sequence</b>	RLGMKDAAELLGHREAVKCRLLGVGGSDPGGHPGDLAPNSDPVEGATLLPGEDITTVGSTPASLA VSAKDPDKQPGPQGGPNPSQAGQQQQQKQKRHRTRFTPAQLNELE
<b>Host</b>	Mouse
<b>Reactivity</b>	Human
<b>Interspecies Antigen Sequence</b>	Mouse (100); Rat (100)
<b>Isotype</b>	IgG2a Kappa
<b>Quality Control Testing</b>	Antibody Reactive Against Recombinant Protein. Western Blot detection against Immunogen (37.84 KDa) .
<b>Storage Buffer</b>	In 1x PBS, pH 7.4
<b>Storage Instruction</b>	Store at -20°C or lower. Aliquot to avoid repeated freezing and thawing.

## Applications

- Western Blot (Cell lysate)

OTP monoclonal antibody (M03), clone 8E12. Western Blot analysis of OTP expression in Hela S3 NE.

[Protocol Download](#)

- Western Blot (Transfected lysate)

Western Blot analysis of OTP expression in transfected 293T cell line by OTP monoclonal antibody (M03), clone 8E12.

Lane 1: OTP transfected lysate (Predicted MW: 34.2 KDa).

Lane 2: Non-transfected lysate.

[Protocol Download](#)

- Western Blot (Recombinant protein)

[Protocol Download](#)

- Sandwich ELISA (Recombinant protein)

Detection limit for recombinant GST tagged OTP is 0.03 ng/ml as a capture antibody.

[Protocol Download](#)

- ELISA

## Gene Info — OTP

Entrez GeneID	<a href="#">23440</a>
---------------	-----------------------

GeneBank Accession#	<a href="#">NM_032109</a>
---------------------	---------------------------

Protein Accession#	<a href="#">NP_115485.1</a>
--------------------	-----------------------------

Gene Name	OTP
-----------	-----

Gene Alias	MGC3161
------------	---------

Gene Description	orthopedia homeobox
------------------	---------------------

Omim ID	<a href="#">604529</a>
---------	------------------------

Gene Ontology	<a href="#">Hyperlink</a>
---------------	---------------------------

Gene Summary	This gene encodes a member of the homeodomain (HD) family. HD family proteins are helix-turn-helix transcription factors that play key roles in the specification of cell fates. This protein may function during brain development. [provided by RefSeq]
--------------	---

Other Designations	orthopedia homolog
--------------------	--------------------