

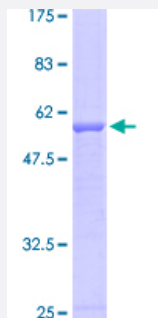
Full-Length

ELA3B (Human) Recombinant Protein (P02)

Catalog # H00023436-P02

Size 25 ug, 10 ug

Applications



Specification

Product Description

Human ELA3B full-length ORF (AAH05216, 1 a.a. - 270 a.a.) recombinant protein with GST-tag at N-terminal.

Sequence

MMLRLLSSPLLVAVASGYGPPSSRPSSRVVNGEDAVPYSWPWQVSLQYEKSGSFYHTCGGSLI
APDWVVTAGHCISSSWTYQVVLGEYDRAVKEGPEQVIPINSGDLFVHPLWNRSCVACGNDIALIK
LSRSAQLGDAVQLASLPPAGDILPNETPCYITGWGRLYTNGPLPDKLQEALLPVVDYEHCSRWN
WWGSSVKKTMCAGGDIRSGCNGDSGGPLNCPTEDGGWQVHGVTSFVSAFGCNTRRKPTVFT
RVSAFIDWIEETIASH

Host

Wheat Germ (in vitro)

Theoretical MW (kDa)

55.44

Interspecies Antigen Sequence

Mouse (84); Rat (82)

Preparation Method

[in vitro wheat germ expression system](#)

Purification

Glutathione Sepharose 4 Fast Flow

Quality Control Testing

12.5% SDS-PAGE Stained with Coomassie Blue

Storage Buffer

50 mM Tris-HCl, 10 mM reduced Glutathione, pH=8.0 in the elution buffer.

Storage Instruction

Store at -80°C. Aliquot to avoid repeated freezing and thawing.

Note

Best use within three months from the date of receipt of this protein.

Applications

- Enzyme-linked Immunoabsorbent Assay
- Western Blot (Recombinant protein)
- Antibody Production
- Protein Array

Gene Info — ELA3B

Entrez GeneID[23436](#)**GeneBank Accession#**[BC005216](#)**Protein Accession#**[AAH05216](#)**Gene Name**

ELA3B

Gene Alias

-

Gene Description

elastase 3B, pancreatic

Gene Ontology[Hyperlink](#)**Gene Summary**

Elastases form a subfamily of serine proteases that hydrolyze many proteins in addition to elastin. Humans have six elastase genes which encode the structurally similar proteins elastase 1, 2, 2A, 2B, 3A, and 3B. Unlike other elastases, elastase 3B has little elastolytic activity. Like most of the human elastases, elastase 3B is secreted from the pancreas as a zymogen and, like other serine proteases such as trypsin, chymotrypsin and kallikrein, it has a digestive function in the intestine. Elastase 3B preferentially cleaves proteins after alanine residues. Elastase 3B may also function in the intestinal transport and metabolism of cholesterol. Both elastase 3A and elastase 3B have been referred to as protease E and as elastase 1, and excretion of this protein in fecal material is frequently used as a measure of pancreatic function in clinical assays. [provided by RefSeq

Other Designations

OTTHUMP00000002837|elastase 1|elastase 3B|protease E