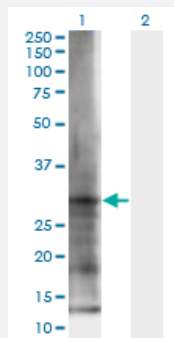


ELA3B monoclonal antibody (M06), clone 3H3

Catalog # H00023436-M06

Size 100 ug

Applications

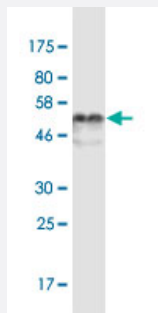


Western Blot (Transfected lysate)

Western Blot analysis of ELA3B expression in transfected 293T cell line by ELA3B monoclonal antibody (M06), clone 3H3.

Lane 1: ELA3B transfected lysate (Predicted MW: 29.3 KDa).

Lane 2: Non-transfected lysate.



Western Blot detection against Immunogen (53.46 KDa) .

Specification

Product Description

Mouse monoclonal antibody raised against a full-length recombinant ELA3B.

Immunogen

ELA3B (AAH05216, 19 a.a. ~ 270 a.a) full-length recombinant protein with GST tag. MW of the GST tag alone is 26 KDa.

Sequence

GPPSSRPSSRVVNGEDAVPYSWPWQVSLQYEKSGSFYHTCGGSLIAPDWVVTAGHCISSSWTY
QVVLGEYDRAVKEGPEQVIPINSGDLFVHPLWNRSCVACGNIDIALIKLSRSAQLGDAVQLASLPP
AGDILPNETPCYITGWGRLYTNGPLPDKLQEALLPVVDYEHCSRWNWWGSSVKKTMVCAGGDIR
SGCNGDSGGPLNCPTEDGGWQVHGVTSTFVSAFGCNTRRKPTVFTRVSAFIDWIEETIASH

Host

Mouse

Reactivity

Human

Interspecies Antigen Sequence	Mouse (84); Rat (82)
Isotype	IgG2a Kappa
Quality Control Testing	Antibody Reactive Against Recombinant Protein. Western Blot detection against Immunogen (53.46 KDa) .
Storage Buffer	In 1x PBS, pH 7.4
Storage Instruction	Store at -20°C or lower. Aliquot to avoid repeated freezing and thawing.

Applications

- Western Blot (Transfected lysate)

Western Blot analysis of ELA3B expression in transfected 293T cell line by ELA3B monoclonal antibody (M06), clone 3H3.

Lane 1: ELA3B transfected lysate (Predicted MW: 29.3 KDa).

Lane 2: Non-transfected lysate.

[Protocol Download](#)

- Western Blot (Recombinant protein)

[Protocol Download](#)

- ELISA

Gene Info — ELA3B

Entrez GeneID	23436
GeneBank Accession#	BC005216
Protein Accession#	AAH05216
Gene Name	ELA3B
Gene Alias	-
Gene Description	elastase 3B, pancreatic
Gene Ontology	Hyperlink

Gene Summary

Elastases form a subfamily of serine proteases that hydrolyze many proteins in addition to elastin. Humans have six elastase genes which encode the structurally similar proteins elastase 1, 2, 2A, 2B, 3A, and 3B. Unlike other elastases, elastase 3B has little elastolytic activity. Like most of the human elastases, elastase 3B is secreted from the pancreas as a zymogen and, like other serine proteases such as trypsin, chymotrypsin and kallikrein, it has a digestive function in the intestine. Elastase 3B preferentially cleaves proteins after alanine residues. Elastase 3B may also function in the intestinal transport and metabolism of cholesterol. Both elastase 3A and elastase 3B have been referred to as protease E and as elastase 1, and excretion of this protein in fecal material is frequently used as a measure of pancreatic function in clinical assays. [provided by RefSeq

Other Designations

OTTHUMP00000002837|elastase 1|elastase 3B|protease E