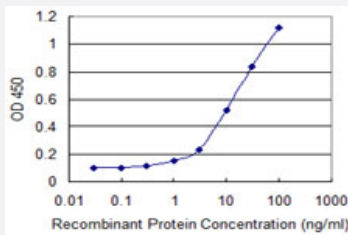


ELA3B monoclonal antibody (M04), clone 2H6

Catalog # H00023436-M04

Size 100 ug

Applications



Sandwich ELISA (Recombinant protein)

Detection limit for recombinant GST tagged ELA3B is 0.3 ng/ml as a capture antibody.

Specification

Product Description	Mouse monoclonal antibody raised against a full length recombinant ELA3B.
Immunogen	ELA3B (AAH05216, 19 a.a. ~ 270 a.a) full-length recombinant protein with GST tag. MW of the GST tag alone is 26 KDa.
Sequence	GPPSSRPSSRVVNGEDAVPYSWPWQVSLQYEKSGSFYHTCGGSLIAPDWVVTAGHCISSSWTY QVVLGEYDRAVKEGPEQVIPINSGDLFVHPLWNRSCVACGNDIALIKLSRSAQLGDAVQLASLPP AGDILPNETPCYITGWGRLYTNGPLPDKLQEALLPVVDYEHCSRWNWWGSSVKKTMVCAGGDIR SGCNGDSGGPLNCP TEDGGWQVHGVTSFVSAFGCNTRRKPTVFTRVSAFIDWIEETASH
Host	Mouse
Reactivity	Human
Interspecies Antigen Sequence	Mouse (84); Rat (82)
Isotype	IgG1 Kappa
Quality Control Testing	Antibody Reactive Against Recombinant Protein.
Storage Buffer	In 1x PBS, pH 7.4

Storage Instruction

Store at -20°C or lower. Aliquot to avoid repeated freezing and thawing.

Applications

- Sandwich ELISA (Recombinant protein)

Detection limit for recombinant GST tagged ELA3B is 0.3 ng/ml as a capture antibody.

[Protocol Download](#)

- ELISA

Gene Info — ELA3B

Entrez GeneID [23436](#)

GeneBank Accession# [BC005216](#)

Protein Accession# [AAH05216](#)

Gene Name ELA3B

Gene Alias -

Gene Description elastase 3B, pancreatic

Gene Ontology [Hyperlink](#)

Gene Summary

Elastases form a subfamily of serine proteases that hydrolyze many proteins in addition to elastin. Humans have six elastase genes which encode the structurally similar proteins elastase 1, 2, 2A, 2B, 3A, and 3B. Unlike other elastases, elastase 3B has little elastolytic activity. Like most of the human elastases, elastase 3B is secreted from the pancreas as a zymogen and, like other serine proteases such as trypsin, chymotrypsin and kallikrein, it has a digestive function in the intestine. Elastase 3B preferentially cleaves proteins after alanine residues. Elastase 3B may also function in the intestinal transport and metabolism of cholesterol. Both elastase 3A and elastase 3B have been referred to as protease E and as elastase 1, and excretion of this protein in fecal material is frequently used as a measure of pancreatic function in clinical assays. [provided by RefSeq

Other Designations OTTHUMP00000002837|elastase 1|elastase 3B|protease E