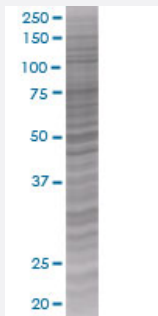


RHOQ 293T Cell Transient Overexpression Lysate(Denatured)

Catalog # H00023433-T01

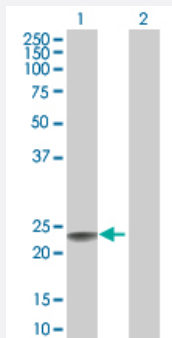
Size 100 uL

Applications



SDS-PAGE Gel

RHOQ transfected lysate.



Western Blot

Lane 1: RHOQ transfected lysate (22.7 KDa)

Lane 2: Non-transfected lysate.

Specification

Transfected Cell Line	293T
Plasmid	pCMV-RHOQ full-length
Host	Human
Theoretical MW (kDa)	22.66
Interspecies Antigen Sequence	Mouse (99); Rat (99)

Quality Control Testing

Transient overexpression cell lysate was tested with Anti-RHOQ antibody ([H00023433-B01](#)) by Western Blots.
SDS-PAGE Gel
RHOQ transfected lysate.
Western Blot
Lane 1: RHOQ transfected lysate (22.7 KDa)
Lane 2: Non-transfected lysate.

Storage Buffer

1X Sample Buffer (50 mM Tris-HCl, 2% SDS, 10% glycerol, 300 mM 2-mercaptoethanol, 0.01% Bromophenol blue)

Storage Instruction

Store at -80°C. Aliquot to avoid repeated freezing and thawing.

Applications

- Western Blot

Gene Info — RHOQ

Entrez GeneID[23433](#)**GeneBank Accession#**[NM_012249](#)**Protein Accession#**[NP_036381](#)**Gene Name**

RHOQ

Gene Alias

ARHQ, RASL7A, TC10, TC10A

Gene Description

ras homolog gene family, member Q

Omim ID[605857](#)**Gene Ontology**[Hyperlink](#)**Gene Summary**

TC10 is a member of the RAS superfamily of small GTP-binding proteins (see HRAS, MIM 190020) involved in insulin-stimulated glucose uptake.[supplied by OMIM]

Other Designations

RAS-like, family 7, member A|ras-like protein TC10

Pathway

- [Insulin signaling pathway](#)

Disease

- [Diabetes Mellitus](#)
- [Genetic Predisposition to Disease](#)