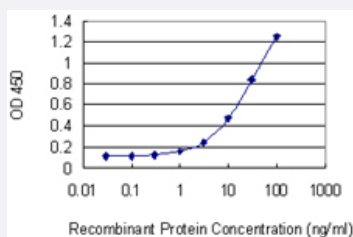


# RHOQ monoclonal antibody (M03), clone 2C1

Catalog # H00023433-M03

Size 100 ug

## Applications



### Sandwich ELISA (Recombinant protein)

Detection limit for recombinant GST tagged RHOQ is 0.3 ng/ml as a capture antibody.

## Specification

<b>Product Description</b>	Mouse monoclonal antibody raised against a partial recombinant RHOQ.
<b>Immunogen</b>	RHOQ (NP_036381, 106 a.a. ~ 204 a.a) partial recombinant protein with GST tag. MW of the GST tag alone is 26 KDa.
<b>Sequence</b>	ELKEYAPNVPFLLIGTQIDLRDDPKTLARLNDMKEKPICVEQGQKLAKELGACCVVECSALTQKGLKTVFDEAIIAILTPKKHTVKKRIGSRCINCLI
<b>Host</b>	Mouse
<b>Reactivity</b>	Human
<b>Interspecies Antigen Sequence</b>	Mouse (99); Rat (99)
<b>Isotype</b>	IgG2b Kappa
<b>Quality Control Testing</b>	Antibody Reactive Against Recombinant Protein.
<b>Storage Buffer</b>	In 1x PBS, pH 7.4
<b>Storage Instruction</b>	Store at -20°C or lower. Aliquot to avoid repeated freezing and thawing.

## Applications

- Sandwich ELISA (Recombinant protein)

Detection limit for recombinant GST tagged RHOQ is 0.3 ng/ml as a capture antibody.

[Protocol Download](#)

- ELISA

## Gene Info — RHOQ

Entrez GeneID	<a href="#">23433</a>
GeneBank Accession#	<a href="#">NM_012249</a>
Protein Accession#	<a href="#">NP_036381</a>
Gene Name	RHOQ
Gene Alias	ARHQ, RASL7A, TC10, TC10A
Gene Description	ras homolog gene family, member Q
Omim ID	<a href="#">605857</a>
Gene Ontology	<a href="#">Hyperlink</a>
Gene Summary	TC10 is a member of the RAS superfamily of small GTP-binding proteins (see HRAS, MIM 190020) involved in insulin-stimulated glucose uptake.[supplied by OMIM]
Other Designations	RAS-like, family 7, member A ras-like protein TC10

## Pathway

- [Insulin signaling pathway](#)

## Disease

- [Diabetes Mellitus](#)
- [Genetic Predisposition to Disease](#)