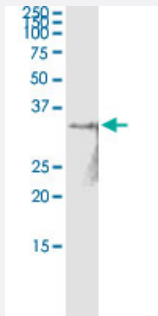


RYBP (Human) IP-WB Antibody Pair

Catalog # H00023429-PW4

Size 1 Set

Applications



Immunoprecipitation of RYBP transfected lysate using rabbit polyclonal anti-RYBP and Protein A Magnetic Bead ([U0007](#)), and immunoblotted with mouse purified polyclonal anti-RYBP.

Specification

Product Description	This IP-WB antibody pair set comes with one antibody for immunoprecipitation and another to detect the precipitated protein in western blot.
Reactivity	Human
Quality Control Testing	Immunoprecipitation-Western Blot (IP-WB) Immunoprecipitation of RYBP transfected lysate using rabbit polyclonal anti-RYBP and Protein A Magnetic Bead (U0007), and immunoblotted with mouse purified polyclonal anti-RYBP.
Supplied Product	Antibody pair set content: 1. Antibody pair for IP: rabbit polyclonal anti-RYBP (300 ul) 2. Antibody pair for WB: mouse purified polyclonal anti-RYBP (50 ug)
Storage Instruction	Store reagents of the antibody pair set at -20°C or lower. Please aliquot to avoid repeated freeze thaw cycle. Reagents should be returned to -20°C storage immediately after use.

Applications

- Immunoprecipitation-Western Blot

[Protocol Download](#)

Gene Info — RYBP

Entrez GeneID	23429
Gene Name	RYBP
Gene Alias	AAP1, DEDAF, YEAF1
Gene Description	RING1 and YY1 binding protein
Omim ID	607535
Gene Ontology	Hyperlink
Other Designations	YY1 and E4TF1 associated factor 1 apoptin-associating protein 1 death effector domain-associated factor ring1 interactor RYBP

Disease

- [Tobacco Use Disorder](#)