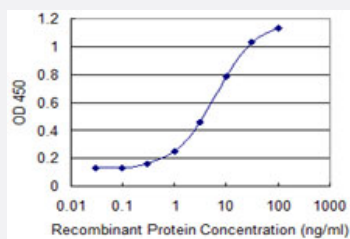


# COMMD3 monoclonal antibody (M01), clone 2E2

Catalog # H00023412-M01

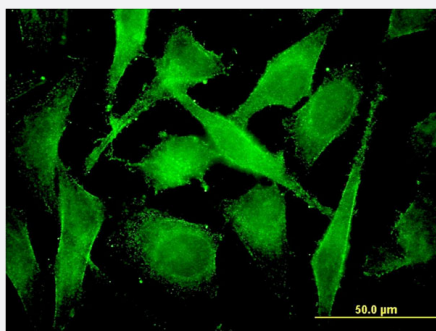
Size 100 ug

## Applications



### Sandwich ELISA (Recombinant protein)

Detection limit for recombinant GST tagged COMMD3 is 0.1 ng/ml as a capture antibody.



### Immunofluorescence

Immunofluorescence of monoclonal antibody to COMMD3 on HeLa cell .  
[antibody concentration 10 ug/ml]

## Specification

### Product Description

Mouse monoclonal antibody raised against a full-length recombinant COMMD3.

### Immunogen

COMMD3 (AAH22898, 1 a.a. ~ 195 a.a) full-length recombinant protein with GST tag. MW of the GST tag alone is 26 KDa.

### Sequence

MELSESVQKGFQMLADPRSFDSNAFTLLLRAAFQSLLDAQADEAVLDHPDLKHIDPVVLKHCHA  
AAATYLEAGKHRADKSTLSTYLEDCKFDRERIEFCTEYQNNKNSLEILLGSIGRSLPHITDVSRL  
EYQIKTNQLHRMPAYLVTLVQNTDSPSYEISFSCSMEQLQDLVGKLDASKSLERATQS

### Host

Mouse

### Reactivity

Human

Interspecies Antigen Sequence	Mouse (89); Rat (90)
Isotype	IgG2a Kappa
Quality Control Testing	Antibody Reactive Against Recombinant Protein.
Storage Buffer	In 1x PBS, pH 7.4
Storage Instruction	Store at -20°C or lower. Aliquot to avoid repeated freezing and thawing.

## Applications

- Sandwich ELISA (Recombinant protein)

Detection limit for recombinant GST tagged COMMD3 is 0.1 ng/ml as a capture antibody.

[Protocol Download](#)

- ELISA

- Immunofluorescence

Immunofluorescence of monoclonal antibody to COMMD3 on HeLa cell . [antibody concentration 10 ug/ml]

## Gene Info — COMMD3

Entrez GeneID	<a href="#">23412</a>
GeneBank Accession#	<a href="#">BC022898</a>
Protein Accession#	<a href="#">AAH22898</a>
Gene Name	COMMD3
Gene Alias	BUP, C10orf8, DKFZp686K0399, FLJ45471
Gene Description	COMM domain containing 3
Gene Ontology	<a href="#">Hyperlink</a>
Other Designations	OTTHUMP00000019286