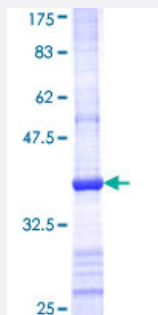


COTL1 (Human) Recombinant Protein (Q01)

Catalog # H00023406-Q01

Size 25 ug, 10 ug

Applications



Specification

Product Description	Human COTL1 partial ORF (NP_066972, 1 a.a. - 100 a.a.) recombinant protein with GST-tag at N-terminal.
Sequence	MATKIDKEACRAAYNLVRDDGSAVIWVTFKYDGSTIVPGEQGAEYQHFIQQCTDDVRLFAFVRFTT GDAMSKRSKFALITWIGENVSGLQRAKTGTDKTL
Host	Wheat Germ (in vitro)
Theoretical MW (kDa)	36.74
Interspecies Antigen Sequence	Rat (95)
Preparation Method	in vitro wheat germ expression system
Purification	Glutathione Sepharose 4 Fast Flow
Quality Control Testing	12.5% SDS-PAGE Stained with Coomassie Blue.
Storage Buffer	50 mM Tris-HCl, 10 mM reduced Glutathione, pH=8.0 in the elution buffer.
Storage Instruction	Store at -80°C. Aliquot to avoid repeated freezing and thawing.
Note	Best use within three months from the date of receipt of this protein.

Applications

- Enzyme-linked Immunoabsorbent Assay
- Western Blot (Recombinant protein)
- Antibody Production
- Protein Array

Gene Info — COTL1

Entrez GeneID [23406](#)

GeneBank Accession# [NM_021149](#)

Protein Accession# [NP_066972](#)

Gene Name COTL1

Gene Alias CLP, FLJ43657, MGC19733

Gene Description coactosin-like 1 (Dictyostelium)

Omim ID [606748](#)

Gene Ontology [Hyperlink](#)

Gene Summary This gene encodes one of the numerous actin-binding proteins which regulate the actin cytoskeleton. This protein binds F-actin, and also interacts with 5-lipoxygenase, which is the first committed enzyme in leukotriene biosynthesis. Although this gene has been reported to map to chromosome 17 in the Smith-Magenis syndrome region, the best alignments for this gene are to chromosome 16. The Smith-Magenis syndrome region is the site of two related pseudogenes. [provided by RefSeq]

Other Designations coactosin-like 1

Disease

- [Arthritis](#)
- [Autoimmune Diseases](#)
- [Lupus Erythematosus](#)