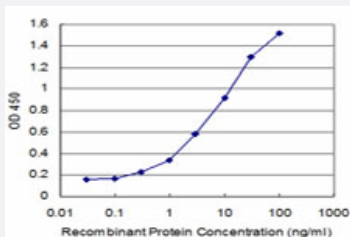


ATP13A2 monoclonal antibody (M06), clone 4B7

Catalog # H00023400-M06

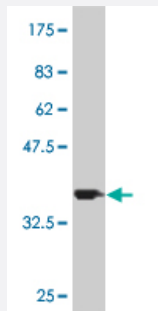
Size 100 ug

Applications



Sandwich ELISA (Recombinant protein)

Detection limit for recombinant GST tagged ATP13A2 is approximately 0.1ng/ml as a capture antibody.



Western Blot detection against Immunogen (35.31 KDa) .

Specification

Product Description	Mouse monoclonal antibody raised against a partial recombinant ATP13A2.
Immunogen	ATP13A2 (NP_071372, 68 a.a. ~ 154 a.a) partial recombinant protein with GST tag. MW of the GST tag alone is 26 KDa.
Sequence	KPLWGVRLRLRPCNLAHAETLVIEIRDKEDSSWQLFTVQVQTEAIGEGSLEPSPQSQAEDGRSQA AVGAVPEGAWKDTAQLHKSEEA
Host	Mouse
Reactivity	Human
Isotype	IgG2a Kappa

Quality Control Testing	Antibody Reactive Against Recombinant Protein. Western Blot detection against Immunogen (35.31 KDa) .
Storage Buffer	In 1x PBS, pH 7.4
Storage Instruction	Store at -20°C or lower. Aliquot to avoid repeated freezing and thawing.

Applications

- Western Blot (Recombinant protein)

[Protocol Download](#)

- Sandwich ELISA (Recombinant protein)

Detection limit for recombinant GST tagged ATP13A2 is approximately 0.1ng/ml as a capture antibody.

[Protocol Download](#)

- ELISA

Gene Info — ATP13A2

Entrez GeneID [23400](#)

GeneBank Accession# [NM_022089](#)

Protein Accession# [NP_071372](#)

Gene Name ATP13A2

Gene Alias FLJ26510, HSA9947, KRPPD, PARK9

Gene Description ATPase type 13A2

Omim ID [606693 610513](#)

Gene Ontology [Hyperlink](#)

Gene Summary This gene encodes a member of the P5 subfamily of ATPases which transports inorganic cations as well as other substrates. Mutations in this gene are associated with Kufor-Rakeb syndrome (KRS), also referred to as Parkinson disease 9. Multiple transcript variants encoding different isoforms have been found for this gene

Other Designations OTTHUMP00000002399|putative ATPase

Disease

- [Genetic Predisposition to Disease](#)
- [Parkinson disease](#)
- [Parkinsonian Disorders](#)