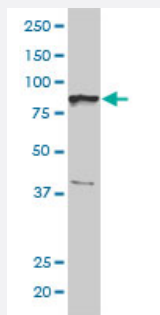


# BRRN1 monoclonal antibody (M01), clone 1C9

Catalog # H00023397-M01

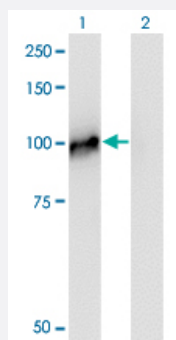
Size 100 ug

## Applications



### Western Blot (Cell lysate)

BRRN1 monoclonal antibody (M01), clone 1C9 Western Blot analysis of BRRN1 expression in Jurkat ( Cat # L017V1 ).

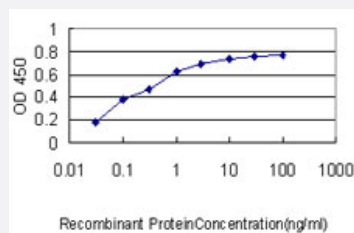


### Western Blot (Transfected lysate)

Western Blot analysis of NCAPH expression in transfected 293T cell line by NCAPH monoclonal antibody (M01), clone 1C9.

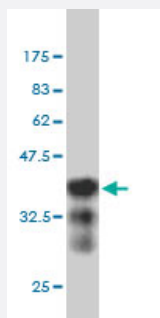
Lane 1: NCAPH transfected lysate (Predicted MW: 82.5 KDa).

Lane 2: Non-transfected lysate.



### Sandwich ELISA (Recombinant protein)

Detection limit for recombinant GST tagged BRRN1 is approximately 0.03ng/ml as a capture antibody.



Western Blot detection against Immunogen (36.3 KDa) .

## Specification

<b>Product Description</b>	Mouse monoclonal antibody raised against a partial recombinant BRRN1.
<b>Immunogen</b>	BRRN1 (AAH24211, 645 a.a. ~ 741 a.a) partial recombinant protein with GST tag. MW of the GST tag alone is 26 KDa.
<b>Sequence</b>	KKLKQSMWSLLTALSGKEADAEANHREAGKEAALAEVADEKMLSGLTkDLQRSLPPVMAQNLSI PLAFACLLHLANEKNLKLEGTEdLSDVLVRQGD
<b>Host</b>	Mouse
<b>Reactivity</b>	Human
<b>Interspecies Antigen Sequence</b>	Mouse (78)
<b>Isotype</b>	IgG1 kappa
<b>Quality Control Testing</b>	Antibody Reactive Against Recombinant Protein. Western Blot detection against Immunogen (36.3 KDa) .
<b>Storage Buffer</b>	In 1x PBS, pH 7.4
<b>Storage Instruction</b>	Store at -20°C or lower. Aliquot to avoid repeated freezing and thawing.

## Applications

- Western Blot (Cell lysate)

BRRN1 monoclonal antibody (M01), clone 1C9 Western Blot analysis of BRRN1 expression in Jurkat ( Cat # L017V1 ).

[Protocol Download](#)

- Western Blot (Transfected lysate)

Western Blot analysis of NCAPH expression in transfected 293T cell line by NCAPH monoclonal antibody (M01), clone 1C9.

Lane 1: NCAPH transfected lysate (Predicted MW: 82.5 KDa).

Lane 2: Non-transfected lysate.

[Protocol Download](#)

- Western Blot (Recombinant protein)

[Protocol Download](#)

- Sandwich ELISA (Recombinant protein)

Detection limit for recombinant GST tagged BRRN1 is approximately 0.03ng/ml as a capture antibody.

[Protocol Download](#)

- ELISA

## Gene Info — NCAPH

Entrez GeneID [23397](#)

GeneBank Accession# [BC024211](#)

Protein Accession# [AAH24211](#)

Gene Name NCAPH

Gene Alias BRRN1, CAP-H, HCAP-H

Gene Description non-SMC condensin I complex, subunit H

Omim ID [602332](#)

Gene Ontology [Hyperlink](#)

**Gene Summary** This gene encodes a member of the barr gene family and a regulatory subunit of the condensin complex. This complex is required for the conversion of interphase chromatin into condensed chromosomes. The protein encoded by this gene is associated with mitotic chromosomes, except during the early phase of chromosome condensation. During interphase, the protein has a distinct punctate nucleolar localization. [provided by RefSeq]

**Other Designations** XCAP-H homolog|barren homolog 1|chromosome-associated protein H|condensin complex subunit 2