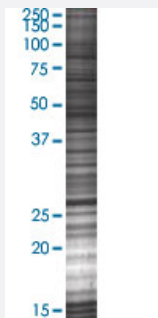


NUDCD3 293T Cell Transient Overexpression Lysate(Denatured)

Catalog # H00023386-T02

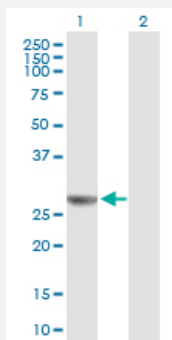
Size 100 uL

Applications



SDS-PAGE Gel

NUDCD3 transfected lysate.



Western Blot

Lane 1: NUDCD3 transfected lysate (24.7 KDa)

Lane 2: Non-transfected lysate.

Specification

Transfected Cell Line	293T
Plasmid	pCMV-NUDCD3 full-length
Host	Human
Theoretical MW (kDa)	24.7
Interspecies Antigen Sequence	Mouse (90)

Quality Control Testing

Transient overexpression cell lysate was tested with Anti-NUDCD3 antibody ([H00023386-B01P](#)) by Western Blots.
 SDS-PAGE Gel
 NUDCD3 transfected lysate.
 Western Blot
 Lane 1: NUDCD3 transfected lysate (24.7 KDa)
 Lane 2: Non-transfected lysate.

Storage Buffer

1X Sample Buffer (50 mM Tris-HCl, 2% SDS, 10% glycerol, 300 mM 2-mercaptoethanol, 0.01% Bromophenol blue)

Storage Instruction

Store at -80°C. Aliquot to avoid repeated freezing and thawing.

Applications

- Western Blot

Gene Info — NUDCD3

Entrez GeneID

[23386](#)

GeneBank Accession#

[BC003691](#)

Protein Accession#

[AAH03691.1](#)

Gene Name

NUDCD3

Gene Alias

KIAA1068, NudCL

Gene Description

NudC domain containing 3

Omim ID

[610296](#)

Gene Ontology

[Hyperlink](#)

Gene Summary

The product of this gene functions to maintain the stability of dynein intermediate chain. Depletion of this gene product results in aggregation and degradation of dynein intermediate chain, mislocalization of the dynein complex from kinetochores, spindle microtubules, and spindle poles, and loss of gamma-tubulin from spindle poles. The protein localizes to the Golgi apparatus during interphase, and levels of the protein increase after the G1/S transition. [provided by RefSeq]

Other Designations

NudC-like protein|OTTHUMP00000159457

Disease

- [Tobacco Use Disorder](#)