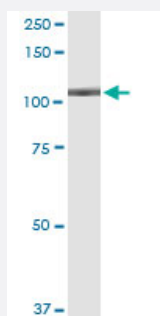


VPS39 (Human) IP-WB Antibody Pair

Catalog # H00023339-PW1

Size 1 Set

Applications



Immunoprecipitation of VPS39 transfected lysate using rabbit polyclonal anti-VPS39 and Protein A Magnetic Bead ([U0007](#)), and immunoblotted with mouse purified polyclonal anti-VPS39.

Specification

Product Description	This IP-WB antibody pair set comes with one antibody for immunoprecipitation and another to detect the precipitated protein in western blot.
Reactivity	Human
Interspecies Antigen Sequence	Mouse (96); Rat (96)
Quality Control Testing	Immunoprecipitation-Western Blot (IP-WB) Immunoprecipitation of VPS39 transfected lysate using rabbit polyclonal anti-VPS39 and Protein A Magnetic Bead (U0007), and immunoblotted with mouse purified polyclonal anti-VPS39.
Supplied Product	Antibody pair set content: 1. Antibody pair for IP: rabbit polyclonal anti-VPS39 (300 ul) 2. Antibody pair for WB: mouse purified polyclonal anti-VPS39 (50 ug)
Storage Instruction	Store reagents of the antibody pair set at -20°C or lower. Please aliquot to avoid repeated freeze thaw cycle. Reagents should be returned to -20°C storage immediately after use.

Applications

- Immunoprecipitation-Western Blot

[Protocol Download](#)

Gene Info — VPS39

Entrez GeneID [23339](#)

Gene Name VPS39

Gene Alias FLJ21681, FLJ46546, KIAA0770, TLP, VAM6, hVam6p

Gene Description vacuolar protein sorting 39 homolog (S. cerevisiae)

Gene Ontology [Hyperlink](#)

Gene Summary This gene encodes a protein that may promote clustering and fusion of late endosomes and lysosomes. The protein may also act as an adaptor protein that modulates the transforming growth factor-beta response by coupling the transforming growth factor-beta receptor complex to the Smad pathway. [provided by RefSeq]

Other Designations TRAP1-like protein|Vam6/Vps39-like|vacuolar protein sorting 39

Disease

- [Cardiovascular Diseases](#)
- [Diabetes Mellitus](#)
- [Edema](#)