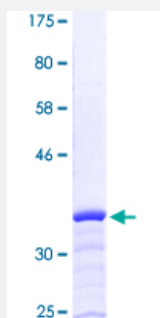


# SYNM (Human) Recombinant Protein (Q01)

Catalog # H00023336-Q01

Size 25 ug, 10 ug

## Applications



## Specification

<b>Product Description</b>	Human SYNM partial ORF ( NP_663780.1, 1466 a.a. - 1565 a.a.) recombinant protein with GST-tag at N-terminal.
<b>Sequence</b>	VSNVEAIRSRTQEAGALGVSDRGSWRDADSRNDQAVGVSFKASAGEGDQAHREQGKEQAMFD KKVQLQRMVDQRSVISDEKKVALLYLDNEEEEENDGHWF
<b>Host</b>	Wheat Germ (in vitro)
<b>Theoretical MW (kDa)</b>	36.74
<b>Interspecies Antigen Sequence</b>	Mouse (60); Rat (61)
<b>Preparation Method</b>	<a href="#">in vitro wheat germ expression system</a>
<b>Purification</b>	Glutathione Sepharose 4 Fast Flow
<b>Quality Control Testing</b>	12.5% SDS-PAGE Stained with Coomassie Blue.
<b>Storage Buffer</b>	50 mM Tris-HCl, 10 mM reduced Glutathione, pH=8.0 in the elution buffer.
<b>Storage Instruction</b>	Store at -80°C. Aliquot to avoid repeated freezing and thawing.
<b>Note</b>	Best use within three months from the date of receipt of this protein.

## Applications

- Enzyme-linked Immunoabsorbent Assay
- Western Blot (Recombinant protein)
- Antibody Production
- Protein Array

## Gene Info — SYNM

**Entrez GeneID** [23336](#)

**GeneBank Accession#** [NM\\_145728](#)

**Protein Accession#** [NP\\_663780.1](#)

**Gene Name** SYNM

**Gene Alias** DMN, KIAA0353, SYN

**Gene Description** synemin, intermediate filament protein

**Omim ID** [606087](#)

**Gene Ontology** [Hyperlink](#)

**Gene Summary** The protein encoded by this gene is an intermediate filament (IF) family member. IF proteins are cytoskeletal proteins that confer resistance to mechanical stress and are encoded by a dispersed multigene family. This protein has been found to form a linkage between desmin, which is a subunit of the IF network, and the extracellular matrix, and provides an important structural support in muscle. Two alternatively spliced variants encoding different isoforms have been described for this gene. [provided by RefSeq]

**Other Designations** desmuslin|synemin alpha|synemin beta