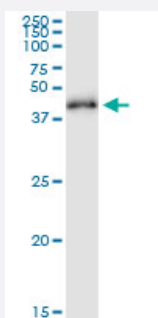


RRS1 (Human) IP-WB Antibody Pair

Catalog # H00023212-PW1

Size 1 Set

Applications



Immunoprecipitation of RRS1 transfected lysate using rabbit polyclonal anti-RRS1 and Protein A Magnetic Bead ([U0007](#)), and immunoblotted with mouse purified polyclonal anti-RRS1.

Specification

Product Description	This IP-WB antibody pair set comes with one antibody for immunoprecipitation and another to detect the precipitated protein in western blot.
Reactivity	Human
Interspecies Antigen Sequence	Mouse (90); Rat (91)
Quality Control Testing	Immunoprecipitation-Western Blot (IP-WB) Immunoprecipitation of RRS1 transfected lysate using rabbit polyclonal anti-RRS1 and Protein A Magnetic Bead (U0007), and immunoblotted with mouse purified polyclonal anti-RRS1.
Supplied Product	Antibody pair set content: 1. Antibody pair for IP: rabbit polyclonal anti-RRS1 (300 ul) 2. Antibody pair for WB: mouse purified polyclonal anti-RRS1 (50 ug)
Storage Instruction	Store reagents of the antibody pair set at -20°C or lower. Please aliquot to avoid repeated freeze thaw cycle. Reagents should be returned to -20°C storage immediately after use.

Applications

- Immunoprecipitation-Western Blot

[Protocol Download](#)

Gene Info — RRS1

Entrez GeneID	23212
Gene Name	RRS1
Gene Alias	KIAA0112
Gene Description	RRS1 ribosome biogenesis regulator homolog (S. cerevisiae)
Gene Ontology	Hyperlink
Other Designations	homolog of yeast ribosome biogenesis regulator homolog of yeast ribosome biogenesis regulatory protein RRS1 ribosome biogenesis regulatory protein RRS1 homolog