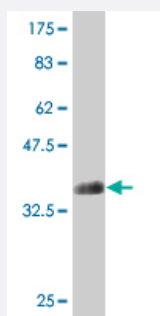


# ATP11B monoclonal antibody (M01), clone 4H8

Catalog # H00023200-M01

Size 100 ug

## Applications



Western Blot detection against Immunogen (35.75 KDa) .

## Specification

<b>Product Description</b>	Mouse monoclonal antibody raised against a partial recombinant ATP11B.
<b>Immunogen</b>	ATP11B (NP_055431, 1087 a.a. ~ 1177 a.a) partial recombinant protein with GST tag. MW of the GST tag alone is 26 KDa.
<b>Sequence</b>	DIKKVFDRLHPTSTTEKAQLTETNAGIKCLDSMCCFPEGEAACASVGRMLERVIGRCSPTHISRS WSASDPFYTNDRSILTLSTMDSSSTC
<b>Host</b>	Mouse
<b>Reactivity</b>	Human
<b>Isotype</b>	IgG1 Kappa
<b>Quality Control Testing</b>	Antibody Reactive Against Recombinant Protein. Western Blot detection against Immunogen (35.75 KDa) .
<b>Storage Buffer</b>	In 1x PBS, pH 7.4
<b>Storage Instruction</b>	Store at -20°C or lower. Aliquot to avoid repeated freezing and thawing.

## Applications

- Western Blot (Recombinant protein)

[Protocol Download](#)

- ELISA

## Gene Info — ATP11B

Entrez GeneID [23200](#)

GeneBank Accession# [NM\\_014616](#)

Protein Accession# [NP\\_055431](#)

Gene Name ATP11B

Gene Alias ATP1F, ATP1R, DKFZp434J238, DKFZp434N1615, KIAA0956, MGC46576

Gene Description ATPase, class VI, type 11B

Omim ID [605869](#)

Gene Ontology [Hyperlink](#)

**Gene Summary** P-type ATPases, such as ATP11B, are phosphorylated in their intermediate state and drive uphill transport of ions across membranes. Several subfamilies of P-type ATPases have been identified. One subfamily transports heavy metal ions, such as Cu(2+) or Cd(2+). Another subfamily transports non-heavy metal ions, such as H(+), Na(+), K(+), or Ca(+). A third subfamily transports amphipaths, such as phosphatidylserine.[supplied by OMIM]

Other Designations -