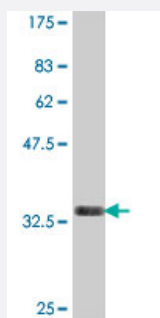


ATP11B polyclonal antibody (A01)

Catalog # H00023200-A01

Size 50 uL

Applications



Western Blot detection against Immunogen (36.12 KDa) .

Specification

Product Description	Mouse polyclonal antibody raised against a partial recombinant ATP11B.
Immunogen	ATP11B (NP_055431, 1087 a.a. ~ 1177 a.a) partial recombinant protein with GST tag.
Sequence	DIKKVFDRHLHPTSTEKAQLTETNAGIKCLDSMCCFPEGEAACASVGRMLERVIGRCSPTHISRS WSASDPFYTNDRSILTLSTMDSSTC
Host	Mouse
Reactivity	Human
Quality Control Testing	Antibody Reactive Against Recombinant Protein. Western Blot detection against Immunogen (36.12 KDa) .
Storage Buffer	50 % glycerol
Storage Instruction	Store at -20°C or lower. Aliquot to avoid repeated freezing and thawing.

Applications

- Western Blot (Recombinant protein)

[Protocol Download](#)

- ELISA

Gene Info — ATP11B

Entrez GeneID [23200](#)

GeneBank Accession# [NM_014616](#)

Protein Accession# [NP_055431](#)

Gene Name ATP11B

Gene Alias ATP1F, ATP1R, DKFZp434J238, DKFZp434N1615, KIAA0956, MGC46576

Gene Description ATPase, class VI, type 11B

Omim ID [605869](#)

Gene Ontology [Hyperlink](#)

Gene Summary P-type ATPases, such as ATP11B, are phosphorylated in their intermediate state and drive uphill transport of ions across membranes. Several subfamilies of P-type ATPases have been identified. One subfamily transports heavy metal ions, such as Cu(2+) or Cd(2+). Another subfamily transports non-heavy metal ions, such as H(+), Na(+), K(+), or Ca(+). A third subfamily transports amphipaths, such as phosphatidylserine.[supplied by OMIM]

Other Designations -