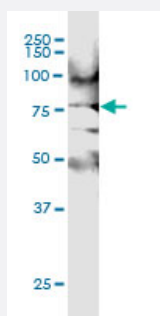


MAP3K7IP2 (Human) IP-WB Antibody Pair

Catalog # H00023118-PW2

Size 1 Set

Applications



Immunoprecipitation of MAP3K7IP2 transfected lysate using rabbit polyclonal anti-MAP3K7IP2 and Protein A Magnetic Bead ([U0007](#)), and immunoblotted with mouse purified polyclonal anti-MAP3K7IP2.

Specification

Product Description	This IP-WB antibody pair set comes with one antibody for immunoprecipitation and another to detect the precipitated protein in western blot.
Reactivity	Human
Quality Control Testing	Immunoprecipitation-Western Blot (IP-WB) Immunoprecipitation of MAP3K7IP2 transfected lysate using rabbit polyclonal anti-MAP3K7IP2 and Protein A Magnetic Bead (U0007), and immunoblotted with mouse purified polyclonal anti-MAP3K7IP2.
Supplied Product	Antibody pair set content: 1. Antibody pair for IP: rabbit polyclonal anti-MAP3K7IP2 (300 ul) 2. Antibody pair for WB: mouse purified polyclonal anti-MAP3K7IP2 (50 ug)
Storage Instruction	Store reagents of the antibody pair set at -20°C or lower. Please aliquot to avoid repeated freeze thaw cycle. Reagents should be returned to -20°C storage immediately after use.

Applications

- Immunoprecipitation-Western Blot

[Protocol Download](#)

Gene Info — MAP3K7IP2

Entrez GeneID	23118
Gene Name	MAP3K7IP2
Gene Alias	FLJ21885, KIAA0733, TAB2
Gene Description	mitogen-activated protein kinase kinase kinase 7 interacting protein 2
Omim ID	605101
Gene Ontology	Hyperlink
Gene Summary	The protein encoded by this gene is an activator of MAP3K7/TAK1, which is required for for the IL -1 induced activation of nuclear factor kappaB and MAPK8/JNK. This protein forms a kinase complex with TRAF6, MAP3K7 and TAB1, thus serves as an adaptor linking MAP3K7 and TRAF6. Th is protein, TAB1, and MAP3K7 also participate in the signal transduction induced by TNFSF11/R ANKI through the activation of the receptor activator of NF-kappaB (TNFRSF11A/RANK), which may regulate the development and function of osteoclasts. [provided by RefSeq
Other Designations	OTTHUMP00000017388 OTTHUMP00000040125 TAK1-binding protein 2

Pathway

- [MAPK signaling pathway](#)
- [Toll-like receptor signaling pathway](#)

Disease

- [Arthritis](#)
- [Genetic Predisposition to Disease](#)
- [Graves Disease](#)