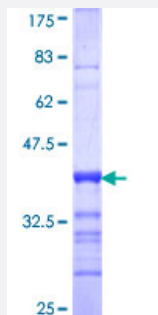


NFASC (Human) Recombinant Protein (Q01)

Catalog # H00023114-Q01

Size 25 ug, 10 ug

Applications



Specification

Product Description	Human NFASC partial ORF (NP_001005388, 661 a.a. - 758 a.a.) recombinant protein with GST-tag at N-terminal.
Sequence	KDDEPLYIGNRMKKEDSLTIFGVAERDQGSYTCVASTELDQDLAKAYLTVLADQATPTNRLAALPKGRPDRPRDLELTDLAERSVRLTWIPGDANNS
Host	Wheat Germ (in vitro)
Theoretical MW (kDa)	36.52
Interspecies Antigen Sequence	Mouse (98); Rat (98)
Preparation Method	in vitro wheat germ expression system
Purification	Glutathione Sepharose 4 Fast Flow
Quality Control Testing	12.5% SDS-PAGE Stained with Coomassie Blue.
Storage Buffer	50 mM Tris-HCl, 10 mM reduced Glutathione, pH=8.0 in the elution buffer.
Storage Instruction	Store at -80°C. Aliquot to avoid repeated freezing and thawing.
Note	Best use within three months from the date of receipt of this protein.

Applications

- Enzyme-linked Immunoabsorbent Assay
- Western Blot (Recombinant protein)
- Antibody Production
- Protein Array

Gene Info — NFASC

Entrez GeneID [23114](#)

GeneBank Accession# [NM_001005388](#)

Protein Accession# [NP_001005388](#)

Gene Name NFASC

Gene Alias DKFZp686P2250, FLJ46866, KIAA0756, NF, NRCAML

Gene Description neurofascin homolog (chicken)

Omim ID [609145](#)

Gene Ontology [Hyperlink](#)

Gene Summary This gene encodes an L1 family immunoglobulin cell adhesion molecule with multiple IGcam and fibronectin domains. The protein functions in neurite outgrowth, neurite fasciculation, and organization of the axon initial segment (AIS) and nodes of Ranvier on axons during early development. Both the AIS and nodes of Ranvier contain high densities of voltage-gated Na⁺ (Nav) channels which are clustered by interactions with cytoskeletal and scaffolding proteins including this protein, gliomedin, ankyrin 3 (ankyrin-G), and betaIV spectrin. This protein links the AIS extracellular matrix to the intracellular cytoskeleton. This gene undergoes extensive alternative splicing, and the full-length nature of some variants has not been determined

Other Designations OTTHUMP00000065305|OTTHUMP00000065306|OTTHUMP00000065307|OTTHUMP00000065308|OTTHUMP00000065313|OTTHUMP00000065315|OTTHUMP00000065321|OTTHUMP00000065322|OTTHUMP00000065324|neurofascin

Pathway

- [Cell adhesion molecules \(CAMs\)](#)

Disease

- [Tobacco Use Disorder](#)