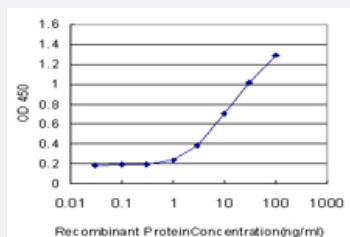


MRPS27 monoclonal antibody (M06), clone 1G3

Catalog # H00023107-M06

Size 100 ug

Applications



Sandwich ELISA (Recombinant protein)

Detection limit for recombinant GST tagged MRPS27 is approximately 1ng/ml as a capture antibody.

Specification

Product Description	Mouse monoclonal antibody raised against a full length recombinant MRPS27.
Immunogen	MRPS27 (AAH30521, 51 a.a. ~ 168 a.a) full-length recombinant protein with GST tag. MW of the GST tag alone is 26 KDa.
Sequence	SEEQSQNDEDNQGSEKLVEQLDIEETEQSKLPQYLERFKALHSKLQALGKIESEGLLSLTQLVK EKLSTCEAEDIATYEQNLQQWHLDLVQLIQREQQREQAKQEYQAQKAASAKASA
Host	Mouse
Reactivity	Human
Isotype	IgG2a Kappa
Quality Control Testing	Antibody Reactive Against Recombinant Protein.
Storage Buffer	In 1x PBS, pH 7.4
Storage Instruction	Store at -20°C or lower. Aliquot to avoid repeated freezing and thawing.

Applications

- Sandwich ELISA (Recombinant protein)

Detection limit for recombinant GST tagged MRPS27 is approximately 1ng/ml as a capture antibody.

[Protocol Download](#)

- ELISA

Gene Info — MRPS27

Entrez GeneID [23107](#)

GeneBank Accession# [BC030521](#)

Protein Accession# [AAH30521](#)

Gene Name MRPS27

Gene Alias FLJ21764, FLJ23348, KIAA0264, MRP-S27, S27mt

Gene Description mitochondrial ribosomal protein S27

Gene Ontology [Hyperlink](#)

Gene Summary Mammalian mitochondrial ribosomal proteins are encoded by nuclear genes and help in protein synthesis within the mitochondrion. Mitochondrial ribosomes (mitoribosomes) consist of a small 28S subunit and a large 39S subunit. They have an estimated 75% protein to rRNA composition compared to prokaryotic ribosomes, where this ratio is reversed. Another difference between mammalian mitoribosomes and prokaryotic ribosomes is that the latter contain a 5S rRNA. Among different species, the proteins comprising the mitoribosome differ greatly in sequence, and sometimes in biochemical properties, which prevents easy recognition by sequence homology. This gene encodes a 28S subunit protein that may be a functional partner of the death associated protein 3 (DAP3). [provided by RefSeq]

Other Designations mitochondrial 28S ribosomal protein S27