

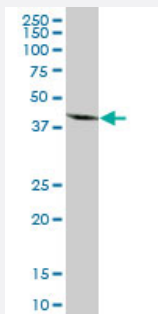
MaxPab®

MRPS27 purified MaxPab mouse polyclonal antibody (B01P)

Catalog # H00023107-B01P

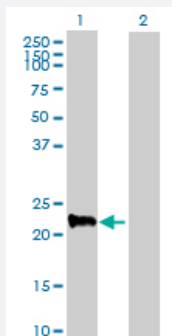
Size 50 ug

Applications



Western Blot (Tissue lysate)

MRPS27 MaxPab polyclonal antibody. Western Blot analysis of MRPS27 expression in human kidney.

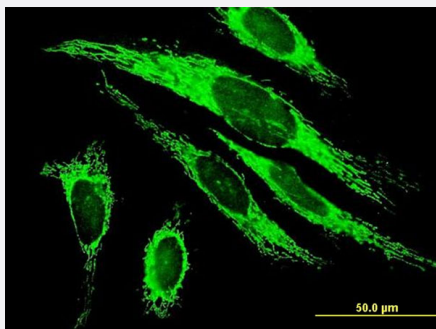


Western Blot (Transfected lysate)

Western Blot analysis of MRPS27 expression in transfected 293T cell line ([H00023107-T01](#)) by MRPS27 MaxPab polyclonal antibody.

Lane 1: MRPS27 transfected lysate(18.48 kDa).

Lane 2: Non-transfected lysate.



Immunofluorescence

Immunofluorescence of purified MaxPab antibody to MRPS27 on HeLa cell. [antibody concentration 10 ug/ml]

Specification

Product Description

Mouse polyclonal antibody raised against a full-length human MRPS27 protein.

Immunogen	MRPS27 (AAH30521.1, 1 a.a. ~ 168 a.a) full-length human protein.
Sequence	MPLIWKPGYLDRALQVMEKVAASPEDIKLCREALDVLGAVLKALTSADGASEEQSQNDEDNQGS EKLVEQLDIEETEQSKLPQYLERFKALHSKLQALGKIESEGLLSLTTQLVKEKLSTCEAEDIATYEQ NLQQWHLDLVQLIQREQQQREQAKQEYQAQKAASKASA
Host	Mouse
Reactivity	Human
Quality Control Testing	Antibody reactive against mammalian transfected lysate.
Storage Buffer	In 1x PBS, pH 7.4
Storage Instruction	Store at -20°C or lower. Aliquot to avoid repeated freezing and thawing.

Applications

- Western Blot (Tissue lysate)

MRPS27 MaxPab polyclonal antibody. Western Blot analysis of MRPS27 expression in human kidney.

[Protocol Download](#)

- Western Blot (Transfected lysate)

Western Blot analysis of MRPS27 expression in transfected 293T cell line ([H00023107-T01](#)) by MRPS27 MaxPab polyclonal antibody.

Lane 1: MRPS27 transfected lysate(18.48 KDa).

Lane 2: Non-transfected lysate.

[Protocol Download](#)

- Immunofluorescence

Immunofluorescence of purified MaxPab antibody to MRPS27 on HeLa cell. [antibody concentration 10 ug/ml]

Gene Info — MRPS27

Entrez GeneID	23107
GeneBank Accession#	BC030521
Protein Accession#	AAH30521.1
Gene Name	MRPS27

Gene Alias	FLJ21764, FLJ23348, KIAA0264, MRP-S27, S27mt
Gene Description	mitochondrial ribosomal protein S27
Gene Ontology	Hyperlink
Gene Summary	<p>Mammalian mitochondrial ribosomal proteins are encoded by nuclear genes and help in protein synthesis within the mitochondrion. Mitochondrial ribosomes (mitoribosomes) consist of a small 28S subunit and a large 39S subunit. They have an estimated 75% protein to rRNA composition compared to prokaryotic ribosomes, where this ratio is reversed. Another difference between mammalian mitoribosomes and prokaryotic ribosomes is that the latter contain a 5S rRNA. Among different species, the proteins comprising the mitoribosome differ greatly in sequence, and sometimes in biochemical properties, which prevents easy recognition by sequence homology. This gene encodes a 28S subunit protein that may be a functional partner of the death associated protein 3 (DAP3). [provided by RefSeq]</p>
Other Designations	mitochondrial 28S ribosomal protein S27