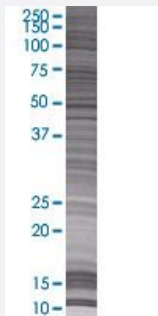


CDC2L6 293T Cell Transient Overexpression Lysate(Denatured)

Catalog # H00023097-T01

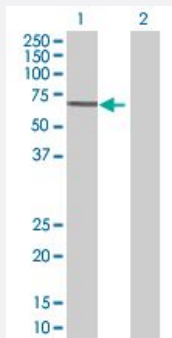
Size 100 uL

Applications



SDS-PAGE Gel

CDC2L6 transfected lysate.



Western Blot

Lane 1: CDC2L6 transfected lysate (55.33 KDa)

Lane 2: Non-transfected lysate.

Specification

Transfected Cell Line 293T

Plasmid pCMV-CDC2L6 full-length

Host Human

Theoretical MW (kDa) 55.33

Quality Control Testing Transient overexpression cell lysate was tested with Anti-CDC2L6 antibody ([H00023097-B01](#)) by Western Blots.
 SDS-PAGE Gel
 CDC2L6 transfected lysate.
 Western Blot
 Lane 1: CDC2L6 transfected lysate (55.33 KDa)
 Lane 2: Non-transfected lysate.

Storage Buffer	1X Sample Buffer (50 mM Tris-HCl, 2% SDS, 10% glycerol, 300 mM 2-mercaptoethanol, 0.01% Bromophenol blue)
Storage Instruction	Store at -80°C. Aliquot to avoid repeated freezing and thawing.

Applications

- Western Blot

Gene Info — CDC2L6

Entrez GeneID	23097
GeneBank Accession#	NM_015076.3
Protein Accession#	NP_055891.1
Gene Name	CDC2L6
Gene Alias	CDK11, KIAA1028, bA346C16.3
Gene Description	cell division cycle 2-like 6 (CDK8-like)
Gene Ontology	Hyperlink
Gene Summary	This gene encodes a protein that is one of the components of the Mediator coactivator complex. The Mediator complex is a multiprotein complex required for transcriptional activation by DNA binding transcription factors of genes transcribed by RNA polymerase II. The protein encoded by this gene is similar to cyclin-dependent kinase 8 which can also be a component of the Mediator complex. [provided by RefSeq]
Other Designations	CDK8-like cyclin-dependent kinase OTTHUMP00000017005 OTTHUMP00000040460 cyclin-dependent kinase (CDC2-like) 11 death-preventing kinase

Disease

- [Tobacco Use Disorder](#)