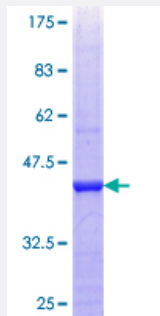


CDC2L6 (Human) Recombinant Protein (Q02)

Catalog # H00023097-Q02

Size 25 ug, 10 ug

Applications



Specification

Product Description	Human CDC2L6 partial ORF (NP_055891.1, 1 a.a. - 114 a.a.) recombinant protein with GST-tag at N-terminal.
Sequence	MDYDFKAKLAAERERVEDLFEYEGCKVGRGTYGHVYKARRKDGKDEKEYALKQIEGTGISM SAC REIALRELKHPNVIALQKVFLSHSDRKVWLLFDYAEHDLWHIIKFHRAS
Host	Wheat Germ (in vitro)
Theoretical MW (kDa)	38.28
Preparation Method	in vitro wheat germ expression system
Purification	Glutathione Sepharose 4 Fast Flow
Quality Control Testing	12.5% SDS-PAGE Stained with Coomassie Blue.
Storage Buffer	50 mM Tris-HCl, 10 mM reduced Glutathione, pH=8.0 in the elution buffer.
Storage Instruction	Store at -80°C. Aliquot to avoid repeated freezing and thawing.
Note	Best use within three months from the date of receipt of this protein.

Applications

- Enzyme-linked Immunoabsorbent Assay
- Western Blot (Recombinant protein)
- Antibody Production
- Protein Array

Gene Info — CDC2L6

Entrez GeneID	23097
GeneBank Accession#	NM_015076
Protein Accession#	NP_055891.1
Gene Name	CDC2L6
Gene Alias	CDK11, KIAA1028, bA346C16.3
Gene Description	cell division cycle 2-like 6 (CDK8-like)
Gene Ontology	Hyperlink
Gene Summary	This gene encodes a protein that is one of the components of the Mediator coactivator complex. The Mediator complex is a multiprotein complex required for transcriptional activation by DNA binding transcription factors of genes transcribed by RNA polymerase II. The protein encoded by this gene is similar to cyclin-dependent kinase 8 which can also be a component of the Mediator complex. [provided by RefSeq]
Other Designations	CDK8-like cyclin-dependent kinase OTTHUMP00000017005 OTTHUMP00000040460 cyclin-dependent kinase (CDC2-like) 11 death-preventing kinase

Disease

- [Tobacco Use Disorder](#)