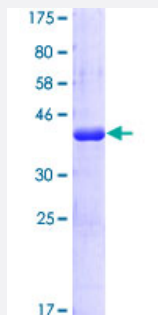


# CDC2L6 (Human) Recombinant Protein (Q01)

Catalog # H00023097-Q01

Size 25 ug, 10 ug

## Applications



## Specification

<b>Product Description</b>	Human CDC2L6 partial ORF ( AAH37289, 367 a.a. - 467 a.a.) recombinant protein with GST-tag at N-terminal.
<b>Sequence</b>	KGDKNQQQQQNQHHQQPTAPPQQAAPPQAPPPQQNSTQTNGTAGGAGAGVGGTGAGLQHSQ DSSLNQVPPNKKPRLGPSGANS GGPMPSDYQHSSSRLNY
<b>Host</b>	Wheat Germ (in vitro)
<b>Theoretical MW (kDa)</b>	36.52
<b>Preparation Method</b>	<a href="#">in vitro wheat germ expression system</a>
<b>Purification</b>	Glutathione Sepharose 4 Fast Flow
<b>Quality Control Testing</b>	12.5% SDS-PAGE Stained with Coomassie Blue.
<b>Storage Buffer</b>	50 mM Tris-HCl, 10 mM reduced Glutathione, pH=8.0 in the elution buffer.
<b>Storage Instruction</b>	Store at -80°C. Aliquot to avoid repeated freezing and thawing.
<b>Note</b>	Best use within three months from the date of receipt of this protein.

## Applications

- Enzyme-linked Immunoabsorbent Assay
- Western Blot (Recombinant protein)
- Antibody Production
- Protein Array

## Gene Info — CDC2L6

**Entrez GeneID** [23097](#)

**GeneBank Accession#** [BC037289](#)

**Protein Accession#** [AAH37289](#)

**Gene Name** CDC2L6

**Gene Alias** CDK11, KIAA1028, bA346C16.3

**Gene Description** cell division cycle 2-like 6 (CDK8-like)

**Gene Ontology** [Hyperlink](#)

**Gene Summary** This gene encodes a protein that is one of the components of the Mediator coactivator complex. The Mediator complex is a multiprotein complex required for transcriptional activation by DNA binding transcription factors of genes transcribed by RNA polymerase II. The protein encoded by this gene is similar to cyclin-dependent kinase 8 which can also be a component of the Mediator complex. [provided by RefSeq]

**Other Designations** CDK8-like cyclin-dependent kinase|OTTHUMP00000017005|OTTHUMP00000040460|cyclin-dependent kinase (CDC2-like) 11|death-preventing kinase

## Disease

- [Tobacco Use Disorder](#)