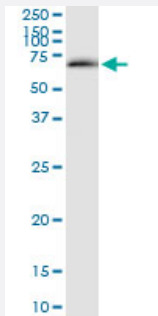


CDC2L6 (Human) IP-WB Antibody Pair

Catalog # H00023097-PW1

Size 1 Set

Applications



Immunoprecipitation of CDC2L6 transfected lysate using rabbit polyclonal anti-CDC2L6 and Protein A Magnetic Bead ([U0007](#)), and immunoblotted with mouse purified polyclonal anti-CDC2L6.

Specification

Product Description	This IP-WB antibody pair set comes with one antibody for immunoprecipitation and another to detect the precipitated protein in western blot.
Reactivity	Human
Quality Control Testing	Immunoprecipitation-Western Blot (IP-WB) Immunoprecipitation of CDC2L6 transfected lysate using rabbit polyclonal anti-CDC2L6 and Protein A Magnetic Bead (U0007), and immunoblotted with mouse purified polyclonal anti-CDC2L6.
Supplied Product	Antibody pair set content: 1. Antibody pair for IP: rabbit polyclonal anti-CDC2L6 (300 ul) 2. Antibody pair for WB: mouse purified polyclonal anti-CDC2L6 (50 ug)
Storage Instruction	Store reagents of the antibody pair set at -20°C or lower. Please aliquot to avoid repeated freeze thaw cycle. Reagents should be returned to -20°C storage immediately after use.

Applications

- Immunoprecipitation-Western Blot

[Protocol Download](#)

Gene Info — CDC2L6

Entrez GeneID [23097](#)**Gene Name** CDC2L6**Gene Alias** CDK11, KIAA1028, bA346C16.3**Gene Description** cell division cycle 2-like 6 (CDK8-like)**Gene Ontology** [Hyperlink](#)

Gene Summary This gene encodes a protein that is one of the components of the Mediator coactivator complex. The Mediator complex is a multiprotein complex required for transcriptional activation by DNA binding transcription factors of genes transcribed by RNA polymerase II. The protein encoded by this gene is similar to cyclin-dependent kinase 8 which can also be a component of the Mediator complex. [provided by RefSeq]

Other Designations CDK8-like cyclin-dependent kinase|OTTHUMP00000017005|OTTHUMP00000040460|cyclin-dependent kinase (CDC2-like) 11|death-preventing kinase

Disease

- [Tobacco Use Disorder](#)