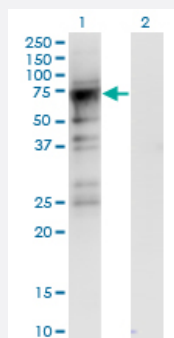


CDC2L6 monoclonal antibody (M06), clone 8B6

Catalog # H00023097-M06

Size 100 ug

Applications

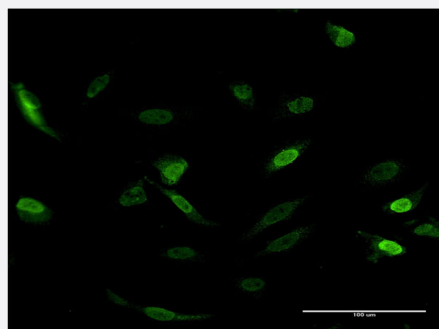


Western Blot (Transfected lysate)

Western Blot analysis of CDC2L6 expression in transfected 293T cell line by CDC2L6 monoclonal antibody (M06), clone 8B6.

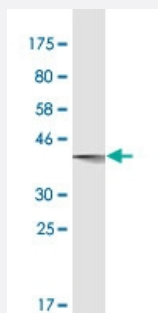
Lane 1: CDC2L6 transfected lysate (Predicted MW: 56.8 kDa).

Lane 2: Non-transfected lysate.



Immunofluorescence

Immunofluorescence of monoclonal antibody to CDC2L6 on HeLa cell .
[antibody concentration 10 ug/ml]



Western Blot detection against Immunogen (36.52 kDa) .

Specification

Product Description

Mouse monoclonal antibody raised against a partial recombinant CDC2L6.

Immunogen	CDC2L6 (AAH37289, 367 a.a. ~ 467 a.a) partial recombinant protein with GST tag. MW of the GST tag alone is 26 KDa.
Sequence	KGDKNQQQQQNQHQQPTAPPQQAAPPQAPPPQQNSTQTNGTAGGAGAGVGGTGAGLQHSQ DSSLNQVPPNKKPRLGPSGANSGGPVMPSDYQHSSSRLNY
Host	Mouse
Reactivity	Human
Isotype	IgG2a Kappa
Quality Control Testing	Antibody Reactive Against Recombinant Protein. Western Blot detection against Immunogen (36.52 KDa) .
Storage Buffer	In 1x PBS, pH 7.4
Storage Instruction	Store at -20°C or lower. Aliquot to avoid repeated freezing and thawing.

Applications

- Western Blot (Transfected lysate)

Western Blot analysis of CDC2L6 expression in transfected 293T cell line by CDC2L6 monoclonal antibody (M06), clone 8B6.

Lane 1: CDC2L6 transfected lysate (Predicted MW: 56.8 KDa).

Lane 2: Non-transfected lysate.

[Protocol Download](#)

- Western Blot (Recombinant protein)

[Protocol Download](#)

- ELISA

- Immunofluorescence

Immunofluorescence of monoclonal antibody to CDC2L6 on HeLa cell . [antibody concentration 10 ug/ml]

Gene Info — CDC2L6

Entrez GeneID	23097
GeneBank Accession#	BC037289
Protein Accession#	AAH37289

Gene Name	CDC2L6
Gene Alias	CDK11, KIAA1028, bA346C16.3
Gene Description	cell division cycle 2-like 6 (CDK8-like)
Gene Ontology	Hyperlink
Gene Summary	<p>This gene encodes a protein that is one of the components of the Mediator coactivator complex. The Mediator complex is a multiprotein complex required for transcriptional activation by DNA binding transcription factors of genes transcribed by RNA polymerase II. The protein encoded by this gene is similar to cyclin-dependent kinase 8 which can also be a component of the Mediator complex. [provided by RefSeq]</p>
Other Designations	CDK8-like cyclin-dependent kinase OTTHUMP00000017005 OTTHUMP00000040460 cyclin-dependent kinase (CDC2-like) 11 death-preventing kinase

Disease

- [Tobacco Use Disorder](#)