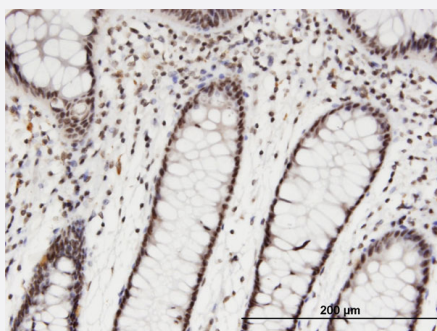


CDC2L6 monoclonal antibody (M02), clone 2F11

Catalog # H00023097-M02

Size 100 ug

Applications



Immunohistochemistry (Formalin/PFA-fixed paraffin-embedded sections)

Immunoperoxidase of monoclonal antibody to CDC2L6 on formalin-fixed paraffin-embedded human colon. [antibody concentration 3 ug/ml]

Specification

Product Description	Mouse monoclonal antibody raised against a partial recombinant CDC2L6.
Immunogen	CDC2L6 (NP_055891.1, 1 a.a. ~ 114 a.a) partial recombinant protein with GST tag. MW of the GST tag alone is 26 KDa.
Sequence	MDYDFKAKLAAERERVELDFEYEGCKVGRGTYGHVYKARRKDGKDEKEYALKQIEGTGISMSAC REIALRELKHPNVIALQKVFLSHSDRKVWLLFDYAEHDLWHIIKFHRAS
Host	Mouse
Reactivity	Human
Isotype	IgG2a Kappa
Quality Control Testing	Antibody Reactive Against Recombinant Protein.
Storage Buffer	In 1x PBS, pH 7.4
Storage Instruction	Store at -20°C or lower. Aliquot to avoid repeated freezing and thawing.

Applications

- Immunohistochemistry (Formalin/PFA-fixed paraffin-embedded sections)

Immunoperoxidase of monoclonal antibody to CDC2L6 on formalin-fixed paraffin-embedded human colon. [antibody concentration 3 ug/ml]

[Protocol Download](#)

- ELISA

Gene Info — CDC2L6

Entrez GeneID [23097](#)

GeneBank Accession# [NM_015076](#)

Protein Accession# [NP_055891.1](#)

Gene Name CDC2L6

Gene Alias CDK11, KIAA1028, bA346C16.3

Gene Description cell division cycle 2-like 6 (CDK8-like)

Gene Ontology [Hyperlink](#)

Gene Summary This gene encodes a protein that is one of the components of the Mediator coactivator complex. The Mediator complex is a multiprotein complex required for transcriptional activation by DNA binding transcription factors of genes transcribed by RNA polymerase II. The protein encoded by this gene is similar to cyclin-dependent kinase 8 which can also be a component of the Mediator complex. [provided by RefSeq]

Other Designations CDK8-like cyclin-dependent kinase|OTTHUMP00000017005|OTTHUMP00000040460|cyclin-dependent kinase (CDC2-like) 11|death-preventing kinase

Disease

- [Tobacco Use Disorder](#)