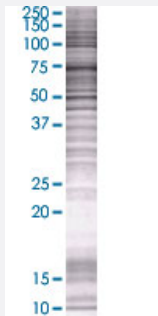


ERC1 293T Cell Transient Overexpression Lysate(Denatured)

Catalog # H00023085-T01

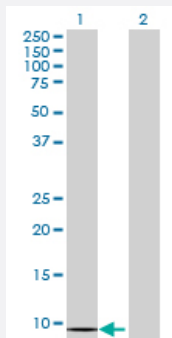
Size 100 uL

Applications



SDS-PAGE Gel

ERC1 transfected lysate.



Western Blot

Lane 1: ERC1 transfected lysate (10.12 KDa)

Lane 2: Non-transfected lysate.

Specification

Product Description

Transfected Cell Line	293T
Plasmid	pCMV-LOC653152 full-length
Host	Human
Theoretical MW (kDa)	10.12

Quality Control Testing

Transient overexpression cell lysate was tested with Anti-LOC653152 antibody ([H00023085-B01](#)) by Western Blots.
SDS-PAGE Gel
ERC1 transfected lysate.
Western Blot
Lane 1: ERC1 transfected lysate (10.12 KDa)
Lane 2: Non-transfected lysate.

Storage Buffer

1X Sample Buffer (50 mM Tris-HCl, 2% SDS, 10% glycerol, 300 mM 2-mercaptoethanol, 0.01% Bromophenol blue)

Storage Instruction

Store at -80°C. Aliquot to avoid repeated freezing and thawing.

Applications

- Western Blot

Gene Info — ERC1

Entrez GeneID[23085](#)**GeneBank Accession#**[XM_936908.1](#)**Protein Accession#**[AAH05065.1](#)**Gene Name**

ERC1

Gene Alias

Cast2, ELKS, KIAA1081, MGC12974, RAB6IP2

Gene Description

ELKS/RAB6-interacting/CAST family member 1

Omim ID[607127](#)**Gene Ontology**[Hyperlink](#)**Gene Summary**

The protein encoded by this gene is a member of a family of RIM-binding proteins. RIMs are active zone proteins that regulate neurotransmitter release. This gene has been found fused to the receptor-type tyrosine kinase gene RET by gene rearrangement due to the translocation t(10;12)(q11;p13). Multiple transcript variants encoding different isoforms have been found for this gene. [provided by RefSeq]

Other Designations

OTTHUMP00000160633|RAB6 interacting protein 2|RAB6-interacting protein 2|Rab6-interacting protein 2

Disease

- [Tobacco Use Disorder](#)