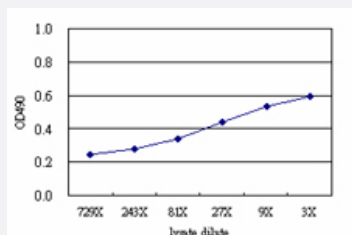


SWAP70 (Human) Matched Antibody Pair

Catalog # H00023075-AP51

Size 1 Set

Applications



Sandwich ELISA detection sensitivity ranging from approximately 81x to 3x dilution of the SWAP70 293T overexpression lysate (non-denatured).

Specification

Product Description	This antibody pair set comes with a matched antibody pair to detect and quantify the protein level of human SWAP70.
Reactivity	Human
Interspecies Antigen Sequence	Mouse (95); Rat (95)
Quality Control Testing	Standard curve using SWAP70 293T overexpression lysate (non-denatured) as an analyte. Sandwich ELISA detection sensitivity ranging from approximately 81x to 3x dilution of the SWAP70 293T overexpression lysate (non-denatured).
Supplied Product	Antibody pair set content: 1. Capture antibody: mouse monoclonal anti-SWAP70 (100 ug) 2. Detection antibody: rabbit purified polyclonal anti-SWAP70 (50 ug) *Reagents are sufficient for at least 3-5 x 96 well plates using recommended protocols.
Storage Instruction	Store reagents of the antibody pair set at -20°C or lower. Please aliquot to avoid repeated freeze thaw cycle. Reagents should be returned to -20°C storage immediately after use.

Applications

- ELISA Pair (Transfected lysate)

[Protocol Download](#)

Gene Info — SWAP70

Entrez GeneID	23075
---------------	-----------------------

Gene Name	SWAP70
-----------	--------

Gene Alias	FLJ39540, HSPC321, KIAA0640, SWAP-70
------------	--------------------------------------

Gene Description	SWAP-70 protein
------------------	-----------------

Omim ID	604762
---------	------------------------

Gene Ontology	Hyperlink
---------------	---------------------------

Other Designations	-
--------------------	---