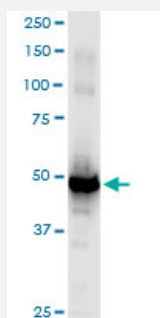


WAPAL (Human) IP-WB Antibody Pair

Catalog # H00023063-PW3

Size 1 Set

Applications



Immunoprecipitation of WAPAL transfected lysate using rabbit polyclonal anti-WAPAL and Protein A Magnetic Bead ([U0007](#)), and immunoblotted with mouse purified polyclonal anti-WAPAL.

Specification

Product Description	This IP-WB antibody pair set comes with one antibody for immunoprecipitation and another to detect the precipitated protein in western blot.
Reactivity	Human
Interspecies Antigen Sequence	Mouse (75); Rat (97)
Quality Control Testing	Immunoprecipitation-Western Blot (IP-WB) Immunoprecipitation of WAPAL transfected lysate using rabbit polyclonal anti-WAPAL and Protein A Magnetic Bead (U0007), and immunoblotted with mouse purified polyclonal anti-WAPAL.
Supplied Product	Antibody pair set content: 1. Antibody pair for IP: rabbit polyclonal anti-WAPAL (300 ul) 2. Antibody pair for WB: mouse purified polyclonal anti-WAPAL (50 ug)
Storage Instruction	Store reagents of the antibody pair set at -20°C or lower. Please aliquot to avoid repeated freeze thaw cycle. Reagents should be returned to -20°C storage immediately after use.

Applications

- Immunoprecipitation-Western Blot

[Protocol Download](#)

Gene Info — WAPAL

Entrez GeneID	23063
Gene Name	WAPAL
Gene Alias	FOE, KIAA0261, WAPL
Gene Description	wings apart-like homolog (Drosophila)
Omim ID	610754
Gene Ontology	Hyperlink
Other Designations	friend of EBNA2 (Epstein-Barr virus nuclear protein 2) wings apart-like homolog wings apart-like protein

Disease

- [Alzheimer Disease](#)
- [Genetic Predisposition to Disease](#)
- [Tobacco Use Disorder](#)