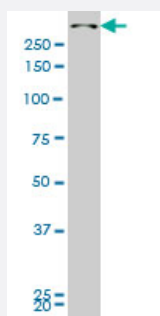


# SMG1 monoclonal antibody (M05), clone 4E4

Catalog # H00023049-M05

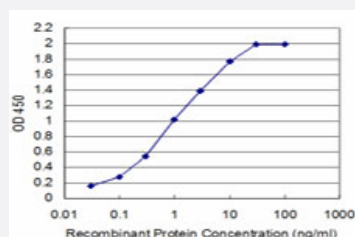
Size 100 ug

## Applications



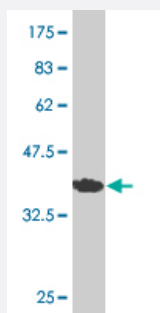
### Western Blot (Cell lysate)

SMG1 monoclonal antibody (M05), clone 4E4 Western Blot analysis of SMG1 expression in HeLa S3 NE ( Cat # L013V3 ).



### Sandwich ELISA (Recombinant protein)

Detection limit for recombinant GST tagged SMG1 is approximately 0.1ng/ml as a capture antibody.



Western Blot detection against Immunogen (37.84 KDa) .

## Specification

### Product Description

Mouse monoclonal antibody raised against a partial recombinant SMG1.

<b>Immunogen</b>	SMG1 (NP_055535, 2922 a.a. ~ 3031 a.a) partial recombinant protein with GST tag. MW of the GST tag alone is 26 KDa.
<b>Sequence</b>	PDVMSQNARKLIQKNLATSADTPPSTVPGTGKSVACSPKKAVRDPKTGKAVQERN SYAVSVWK RVKAKLEGRDVPNRRMSVAEQVDYVIKEATNLDNLAQLYEGWTAWV
<b>Host</b>	Mouse
<b>Reactivity</b>	Human
<b>Interspecies Antigen Sequence</b>	Mouse (97)
<b>Isotype</b>	IgG1 Kappa
<b>Quality Control Testing</b>	Antibody Reactive Against Recombinant Protein. Western Blot detection against Immunogen (37.84 KDa) .
<b>Storage Buffer</b>	In 1x PBS, pH 7.4
<b>Storage Instruction</b>	Store at -20°C or lower. Aliquot to avoid repeated freezing and thawing.

## Applications

- Western Blot (Cell lysate)

SMG1 monoclonal antibody (M05), clone 4E4 Western Blot analysis of SMG1 expression in Hela S3 NE ( Cat # L013V3 ).

[Protocol Download](#)

- Western Blot (Recombinant protein)

[Protocol Download](#)

- Sandwich ELISA (Recombinant protein)

Detection limit for recombinant GST tagged SMG1 is approximately 0.1ng/ml as a capture antibody.

[Protocol Download](#)

- ELISA

## Gene Info — SMG1

Entrez GeneID [23049](#)

GeneBank Accession#	<a href="#">NM_014006</a>
Protein Accession#	<a href="#">NP_055535</a>
Gene Name	SMG1
Gene Alias	61E3.4, ATX, KIAA0421, LIP
Gene Description	SMG1 homolog, phosphatidylinositol 3-kinase-related kinase (C. elegans)
Omim ID	<a href="#">607032</a>
Gene Ontology	<a href="#">Hyperlink</a>
Gene Summary	<p>This gene encodes a protein involved in nonsense-mediated mRNA decay (NMD) as part of the mRNA surveillance complex. The protein has kinase activity and is thought to function in NMD by phosphorylating the regulator of nonsense transcripts 1 protein. Alternative spliced transcript variants have been described, but their full-length natures have not been determined. [provided by RefSeq]</p>
Other Designations	PI-3-kinase-related kinase SMG-1 lambda/iota protein kinase C-interacting protein phosphatidylinositol 3-kinase-related kinase phosphatidylinositol 3-kinase-related protein kinase