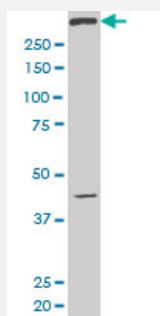


# SMG1 monoclonal antibody (M02), clone 1A8

Catalog # H00023049-M02

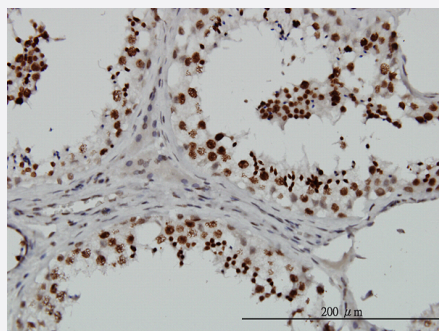
Size 100 ug

## Applications



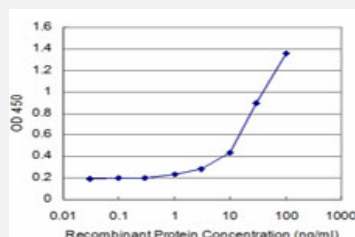
### Western Blot (Cell lysate)

SMG1 monoclonal antibody (M02), clone 1A8 Western Blot analysis of SMG1 expression in HeLa S3 NE ( Cat # L013V3 ).



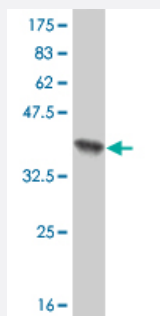
### Immunohistochemistry (Formalin/PFA-fixed paraffin-embedded sections)

Immunoperoxidase of monoclonal antibody to SMG1 on formalin-fixed paraffin-embedded human testis. [antibody concentration 3 ug/ml]



### Sandwich ELISA (Recombinant protein)

Detection limit for recombinant GST tagged SMG1 is approximately 1ng/ml as a capture antibody.



Western Blot detection against Immunogen (37.84 KDa) .

## Specification

<b>Product Description</b>	Mouse monoclonal antibody raised against a partial recombinant SMG1.
<b>Immunogen</b>	SMG1 (NP_055535, 2922 a.a. ~ 3031 a.a) partial recombinant protein with GST tag. MW of the GST tag alone is 26 KDa.
<b>Sequence</b>	PDVMSQNARKLIQKNLATSADTPPSTVPGTGKSVACSPKKAVRDPKTGKAVQERNSYAVSVWK RVKAKLEGRDVPNRRMSVAEQVDYVIKEATNLDNLAQLYEGWTAWV
<b>Host</b>	Mouse
<b>Reactivity</b>	Human
<b>Interspecies Antigen Sequence</b>	Mouse (97)
<b>Isotype</b>	IgG2a Kappa
<b>Quality Control Testing</b>	Antibody Reactive Against Recombinant Protein. Western Blot detection against Immunogen (37.84 KDa) .
<b>Storage Buffer</b>	In 1x PBS, pH 7.4
<b>Storage Instruction</b>	Store at -20°C or lower. Aliquot to avoid repeated freezing and thawing.

## Applications

- Western Blot (Cell lysate)

SMG1 monoclonal antibody (M02), clone 1A8 Western Blot analysis of SMG1 expression in Hela S3 NE ( Cat # L013V3 ).

[Protocol Download](#)

- Western Blot (Recombinant protein)

[Protocol Download](#)

- Immunohistochemistry (Formalin/PFA-fixed paraffin-embedded sections)

Immunoperoxidase of monoclonal antibody to SMG1 on formalin-fixed paraffin-embedded human testis. [antibody concentration 3 ug/ml]

[Protocol Download](#)

- Sandwich ELISA (Recombinant protein)

Detection limit for recombinant GST tagged SMG1 is approximately 1ng/ml as a capture antibody.

[Protocol Download](#)

- ELISA

## Gene Info — SMG1

Entrez GeneID [23049](#)

GeneBank Accession# [NM\\_014006](#)

Protein Accession# [NP\\_055535](#)

Gene Name SMG1

Gene Alias 61E3.4, ATX, KIAA0421, LIP

Gene Description SMG1 homolog, phosphatidylinositol 3-kinase-related kinase (C. elegans)

Omim ID [607032](#)

Gene Ontology [Hyperlink](#)

**Gene Summary** This gene encodes a protein involved in nonsense-mediated mRNA decay (NMD) as part of the mRNA surveillance complex. The protein has kinase activity and is thought to function in NMD by phosphorylating the regulator of nonsense transcripts 1 protein. Alternative spliced transcript variants have been described, but their full-length natures have not been determined. [provided by Ref Seq]

**Other Designations** PI-3-kinase-related kinase SMG-1|lambda/iota protein kinase C-interacting protein|phosphatidylinositol 3-kinase-related kinase|phosphatidylinositol 3-kinase-related protein kinase

## Publication Reference

- [The nonsense-mediated mRNA decay SMG-1 kinase is regulated by large-scale conformational changes controlled by SMG-8.](#)

Arias-Palomo E, Yamashita A, Fernandez IS, Nunez-Ramirez R, Bamba Y, Izumi N, Ohno S, Llorca O.  
Genes & Development 2011 Jan; 25(2):153.

Application: IEM, Recombinant protein

- [Processing bodies are not required for mammalian nonsense-mediated mRNA decay.](#)

Stalder L, Muhlemann O.  
RNA 2009 Jul; 15(7):1265.

Application: WB-Tr, Human, HeLa cells