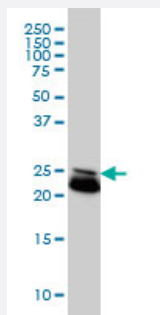


RAB21 monoclonal antibody (M01), clone 1F6

Catalog # H00023011-M01

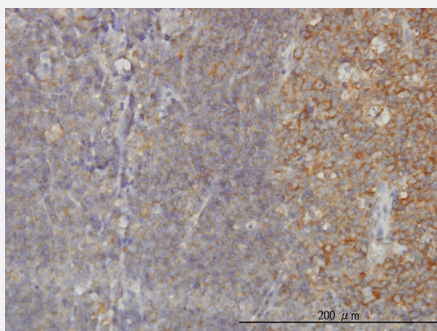
Size 100 ug

Applications



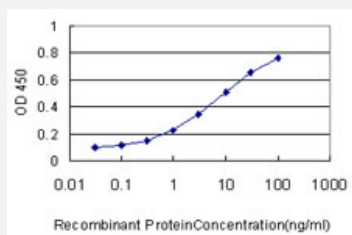
Western Blot (Cell lysate)

RAB21 monoclonal antibody (M01), clone 1F6 Western Blot analysis of RAB21 expression in HeLa (Cat # L013V1).



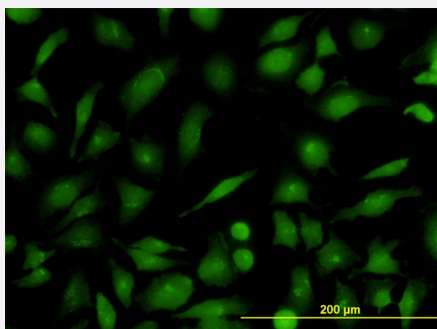
Immunohistochemistry (Formalin/PFA-fixed paraffin-embedded sections)

Immunoperoxidase of monoclonal antibody to RAB21 on formalin-fixed paraffin-embedded human tonsil. [antibody concentration 3 ug/ml]



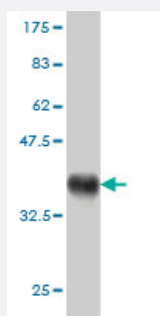
Sandwich ELISA (Recombinant protein)

Detection limit for recombinant GST tagged RAB21 is approximately 0.1ng/ml as a capture antibody.



Immunofluorescence

Immunofluorescence of monoclonal antibody to RAB21 on HeLa cell. [antibody concentration 10 ug/ml]



Western Blot detection against Immunogen (37.84 KDa) .

Specification

Product Description	Mouse monoclonal antibody raised against a partial recombinant RAB21.
Immunogen	RAB21 (NP_055814, 116 a.a. ~ 225 a.a) partial recombinant protein with GST tag. MW of the GST tag alone is 26 KDa.
Sequence	ELRKMLGNEICLCIVGNKIDLEKERHVS IQEAE SVGAKHYHTSAKQNKGIEELFLDLCKRMIET AQVDERAKNGSSQPGTARRGVQIIDDEPQAQTSGGGCCSSG
Host	Mouse
Reactivity	Human
Interspecies Antigen Sequence	Mouse (96); Rat (95)
Isotype	IgG1 Kappa
Quality Control Testing	Antibody Reactive Against Recombinant Protein. Western Blot detection against Immunogen (37.84 KDa) .
Storage Buffer	In 1x PBS, pH 7.4
Storage Instruction	Store at -20°C or lower. Aliquot to avoid repeated freezing and thawing.

Applications

- Western Blot (Cell lysate)

RAB21 monoclonal antibody (M01), clone 1F6 Western Blot analysis of RAB21 expression in HeLa (Cat # L013V1).

[Protocol Download](#)

- Western Blot (Recombinant protein)

[Protocol Download](#)

- Immunohistochemistry (Formalin/PFA-fixed paraffin-embedded sections)

Immunoperoxidase of monoclonal antibody to RAB21 on formalin-fixed paraffin-embedded human tonsil. [antibody concentration 3 ug/ml]

[Protocol Download](#)

- Sandwich ELISA (Recombinant protein)

Detection limit for recombinant GST tagged RAB21 is approximately 0.1ng/ml as a capture antibody.

[Protocol Download](#)

- ELISA

- Immunofluorescence

Immunofluorescence of monoclonal antibody to RAB21 on HeLa cell. [antibody concentration 10 ug/ml]

Gene Info — RAB21

Entrez GeneID	23011
---------------	-----------------------

GeneBank Accession#	NM_014999
---------------------	---------------------------

Protein Accession#	NP_055814
--------------------	---------------------------

Gene Name	RAB21
-----------	-------

Gene Alias	KIAA0118
------------	----------

Gene Description	RAB21, member RAS oncogene family
------------------	-----------------------------------

Gene Ontology	Hyperlink
---------------	---------------------------

Gene Summary

RAB21 belongs to the RAB family of small GTP-binding proteins that regulate intracellular vesicle targeting (Opdam et al., 2000 [PubMed 10887961]).[supplied by OMIM]

Other Designations

-