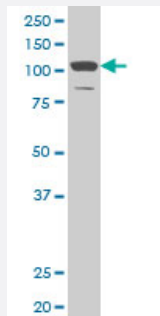


DAAM1 monoclonal antibody (M03), clone 4H3

Catalog # H00023002-M03

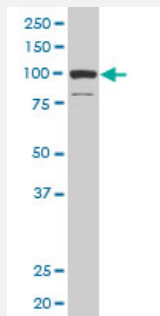
Size 100 ug

Applications



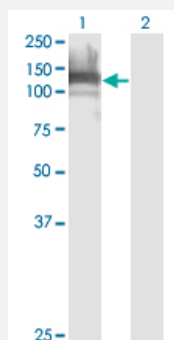
Western Blot (Cell lysate)

DAAM1 monoclonal antibody (M03), clone 4H3. Western Blot analysis of DAAM1 expression in A-431 (Cat # L015V1).



Western Blot (Cell lysate)

DAAM1 monoclonal antibody (M03), clone 4H3. Western Blot analysis of DAAM1 expression in PC-12 (Cat # L012V1).

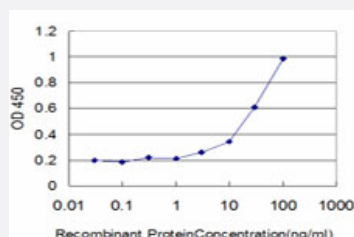


Western Blot (Transfected lysate)

Western Blot analysis of DAAM1 expression in transfected 293T cell line by DAAM1 monoclonal antibody (M03), clone 4H3.

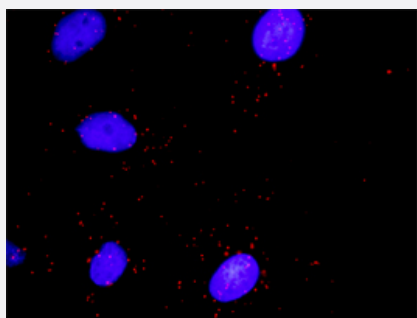
Lane 1: DAAM1 transfected lysate(122.3 KDa).

Lane 2: Non-transfected lysate.



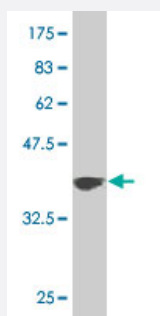
Sandwich ELISA (Recombinant protein)

Detection limit for recombinant GST tagged DAAM1 is approximately 1ng/ml as a capture antibody.



In situ Proximity Ligation Assay (Cell)

Proximity Ligation Analysis of protein-protein interactions between RHOA and DAAM1. HeLa cells were stained with anti-RHOA rabbit purified polyclonal 1:1200 and anti-DAAM1 mouse monoclonal antibody 1:50. Each red dot represents the detection of protein-protein interaction complex, and nuclei were counterstained with DAPI (blue).



Western Blot detection against Immunogen (37.84 KDa) .

Specification

Product Description	Mouse monoclonal antibody raised against a partial recombinant DAAM1.
Immunogen	DAAM1 (NP_055807, 1 a.a. ~ 110 a.a) partial recombinant protein with GST tag. MW of the GST tag alone is 26 KDa.
Sequence	MAPRKRGGRGISFIFCCFRNNDHPEITYRLRNDNFALQTMPEALPMPPVEELDVMFSELVDELD LTDKHREAMFALPAEKKWQYCSKKKDQEENKGATSWPEFYDQL
Host	Mouse
Reactivity	Human, Rat
Interspecies Antigen Sequence	Mouse (97); Rat (99)
Isotype	IgG2a Kappa
Quality Control Testing	Antibody Reactive Against Recombinant Protein. Western Blot detection against Immunogen (37.84 KDa) .
Storage Buffer	In 1x PBS, pH 7.4
Storage Instruction	Store at -20°C or lower. Aliquot to avoid repeated freezing and thawing.

Applications

- Western Blot (Cell lysate)

DAAM1 monoclonal antibody (M03), clone 4H3. Western Blot analysis of DAAM1 expression in A-431 (Cat # L015V1).

[Protocol Download](#)

- Western Blot (Cell lysate)

DAAM1 monoclonal antibody (M03), clone 4H3. Western Blot analysis of DAAM1 expression in PC-12 (Cat # L012V1).

[Protocol Download](#)

- Western Blot (Transfected lysate)

Western Blot analysis of DAAM1 expression in transfected 293T cell line by DAAM1 monoclonal antibody (M03), clone 4H3.

Lane 1: DAAM1 transfected lysate(122.3 KDa).

Lane 2: Non-transfected lysate.

[Protocol Download](#)

- Western Blot (Recombinant protein)

[Protocol Download](#)

- Sandwich ELISA (Recombinant protein)

Detection limit for recombinant GST tagged DAAM1 is approximately 1ng/ml as a capture antibody.

[Protocol Download](#)

- ELISA

- *In situ* Proximity Ligation Assay (Cell)

Proximity Ligation Analysis of protein-protein interactions between RHOA and DAAM1. HeLa cells were stained with anti-RHOA rabbit purified polyclonal 1:1200 and anti-DAAM1 mouse monoclonal antibody 1:50. Each red dot represents the detection of protein-protein interaction complex, and nuclei were counterstained with DAPI (blue).

Gene Info — DAAM1

Entrez GeneID [23002](#)

GeneBank Accession# [NM_014992](#)

Protein Accession#	NP_055807
Gene Name	DAAM1
Gene Alias	FLJ41657, KIAA0666
Gene Description	dishevelled associated activator of morphogenesis 1
Omim ID	606626
Gene Ontology	Hyperlink
Gene Summary	Functions of the cell cortex, including motility, adhesion, and cytokinesis, are mediated by the reorganization of the actin cytoskeleton and recent evidence suggests a role for the Formin homology (FH) proteins in these processes. The protein encoded by this gene contains FH domains and belongs to a novel FH protein subfamily implicated in cell polarity. Wnt/Fz signaling activates the small GTPase Rho, a key regulator of cytoskeleton architecture, to control cell polarity and movement during development. Activation requires Dvl-Rho complex formation, an assembly mediated by this gene product, which is thought to function as a scaffolding protein. Evidence of alternative splicing has been observed for this gene but the full-length nature of these variants has not been determined. [provided by RefSeq]
Other Designations	OTTHUMP00000179033 dishevelled-associated activator of morphogenesis 1

Pathway

- [Wnt signaling pathway](#)

Disease

- [Tobacco Use Disorder](#)