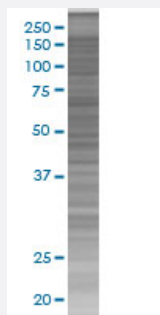


SORCS3 293T Cell Transient Overexpression Lysate(Denatured)

Catalog # H00022986-T01

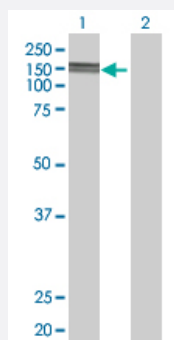
Size 100 uL

Applications



SDS-PAGE Gel

SORCS3 transfected lysate.



Western Blot

Lane 1: SORCS3 transfected lysate (135.8 KDa)

Lane 2: Non-transfected lysate.

Specification

Transfected Cell Line 293T

Plasmid pCMV-SORCS3 full-length

Host Human

Theoretical MW (kDa) 135.8

Quality Control Testing Transient overexpression cell lysate was tested with Anti-SORCS3 antibody ([H00022986-B01](#)) by Western Blots.
SDS-PAGE Gel
SORCS3 transfected lysate.
Western Blot
Lane 1: SORCS3 transfected lysate (135.8 KDa)
Lane 2: Non-transfected lysate.

Storage Buffer	1X Sample Buffer (50 mM Tris-HCl, 2% SDS, 10% glycerol, 300 mM 2-mercaptoethanol, 0.01% Bromophenol blue)
Storage Instruction	Store at -80°C. Aliquot to avoid repeated freezing and thawing.

Applications

- Western Blot

Gene Info — SORCS3

Entrez GeneID	22986
GeneBank Accession#	NM_014978
Protein Accession#	NP_055793
Gene Name	SORCS3
Gene Alias	SORCS
Gene Description	sortilin-related VPS10 domain containing receptor 3
Omim ID	606285
Gene Ontology	Hyperlink
Gene Summary	<p>This gene encodes one family member of vacuolar protein sorting 10 (VPS10) domain-containing receptor proteins. The VPS10 domain name comes from the yeast carboxypeptidase Y sorting receptor Vps10 protein. Members of this gene family are large with many exons but the CDS lengths are usually less than 3700 nt. Very large introns typically separate the exons encoding the VPS10 domain; the remaining exons are separated by much smaller-sized introns. These genes are strongly expressed in the central nervous system. Two of the five family members (sortilin and sortilin-related receptor) are synthesized as preproteins; it is not yet known if this encoded protein is also a preprotein. [provided by RefSeq]</p>
Other Designations	6330404A12Rik OTTHUMP00000020444 VPS10 domain receptor protein SORCS 3 VPS10 domain receptor protein SORCS 3 (SORCS3)

Disease

- [Alzheimer Disease](#)
- [Genetic Predisposition to Disease](#)

- [Tobacco Use Disorder](#)